

Motive Gear®

Choose The Gear Ratio That Is Best For Your Vehicle

When selecting a Gear Ratio, you should consider the following:

1. Tire Size
2. Transmission Ratio
3. Final Gear Ratio
4. Engine RPM at Cruise Speed

The following formula has been developed to calculate the optimum final Gear Ratio to suit your application.

$$\text{M.P.H.} \times \text{Gear Ratio} = \text{rpm} \underline{\hspace{2cm}}$$

$$\text{Tire Diameter} \times 336 = \text{rpm} \underline{\hspace{2cm}}$$

The chart shown below shows RPM calculations at 55 MPH for various combinations of final Gear Ratio and Tire Diameter.

According to this chart, the acceptable RPM range is 2000-3000 which is represented by the entire shaded area of the chart. The optimum RPM range is 2300-2600, and it is represented by the white area between the two red areas. When changing ratios to improve mileage, choose a ratio within the red shaded band above the optimum range. When changing ratios to improve power, choose a ratio within the red shaded band below the optimum range.



Gear Ratio	Tire Diameter																
	24	25	26	27	28	29	30	31	32	33	34	35	36	38	40	42	44
2.56	1972	1892	1820	1752	1690	1631	1577	1526	1478	1434	1391	1352	1314	1245	1183	1126	1075
2.73	2102	2018	1940	1869	1802	1740	1682	1627	1577	1529	1484	1441	1401	1328	1261	1201	1147
2.94	2264	2173	2090	2012	1942	1874	1811	1753	1698	1646	1599	1552	1509	1429	1358	1294	1235
3.08	2372	2277	2189	2108	2033	1963	1897	1836	1779	1725	1674	1626	1581	1498	1423	1355	1294
3.21	2472	2373	2282	2197	2119	2046	1977	1914	1854	1798	1745	1695	1648	1561	1483	1412	1348
3.31	2549	2447	2353	2266	2185	2110	2039	1973	1912	1854	1799	1748	1699	1610	1529	1456	1390
3.42	2633	2528	2303	2341	2257	2179	2107	2039	1975	1915	1859	1806	1756	1663	1580	1505	1436
3.54	2726	2617	2516	2423	2336	2256	2181	2110	2044	1982	1924	1869	1817	1722	1635	1558	1487
3.73	2872	2757	2651	2553	2462	2377	2298	2224	2154	2089	2027	1969	1915	1814	1723	1641	1567
3.90	3003	2883	2772	2669	2574	2485	2402	2325	2252	2184	2120	2059	2002	1897	1802	1716	1638
4.10	3157	3031	2914	2806	2706	2613	2526	2444	2368	2296	2228	2165	2105	1994	1894	1804	1722
4.27	3288	3156	3035	2923	2818	2721	2630	2545	2466	2391	2321	2255	2192	2077	1973	1879	1793
4.56	3511	3371	3291	3121	3010	2906	2809	2718	2633	2554	2478	2408	2341	2218	2107	2006	1915
4.88	3758	3607	3469	3340	3221	3110	3006	2909	2818	2733	2652	2577	2505	2373	2255	2147	2050
5.29	4073	3910	3760	3621	3491	3371	3259	3154	3055	2962	2875	2793	2716	2573	2444	2328	2222
5.38	4143	3977	3824	3682	3551	3428	3314	3207	3107	3013	2924	2841	2762	2616	2486	2367	2260
5.71	4397	4221	4058	3908	3769	3639	3517	3404	3298	3198	3104	3015	2931	2777	2638	2512	2398
6.17	4751	4561	4385	4223	4072	3932	3801	3678	3563	3455	3354	3258	3167	3001	2851	2715	2591
7.17	5521	5300	5096	4907	4732	4569	4417	4274	4141	4015	3897	3786	3681	3487	3313	3155	3011

DEMAND QUALITY... DEMAND MOTIVE GEAR!!!

MANUFACTURER INDEX

A	Page No.
Auto Meter	4, 5
AEM	12, 13, 18, 26, 30, 37, 38, 41
AFE	7, 12, 13, 16, 17, 26, 27, 28, 29, 38, 39, 40
Air Lift	21, 32, 43
Airaid	12, 26, 27,
American Racing	7
ARP	18, 30, 41
B	
B&W	44
Banks	10, 12, 16, 18, 24, 27, 30, 31, 34, 39, 41
BD Diesel	5, 13, 17, 18, 19, 20, 27, 30, 31, 40, 41, 42
Bilstein	43
Blue Ox	5, 10, 12, 16, 17, 18, 19, 24, 26, 28, 29, 30, 31, 34, 39,
Bully Dog	40, 42
D	
Daystar	21, 32, 43
Diablosport	10, 24, 34
Dick Cepek	6, 7
Draw-Tite	44, 45
E	
Eazlift	45
Edge	8, 10, 11, 24, 25, 34, 35
Equal-i-zer	45
F	
Fabtech	32, 43
Firestone	21, 32, 43
Flex-a-lite	18, 30, 41
Fluidamper	18, 30, 41
G	
Green	12, 26, 37
H	
Hawk Performance	20, 32, 42
Hidden Hitch	45
Hopkins	45
Hypertech	11, 25, 35
I	
Injen	12, 26, 37
ISSPRO	5
J	
Jet	35
K	
K&N	12, 13, 18, 22, 26, 27, 30, 35, 38, 41
M	
Magnaflow	16, 17, 28, 39
MBRP	17, 29, 39, 40
Mickey Thompson	6
Motive Gear	6, 20, 32, 43
P	
Predator	11, 25, 35
Pro Comp	6, 7, 21, 32, 43
Pullrite	44
R	
Rancho	21, 32, 43
RapidHitch	45
RBP	6
ReadyLIFT	21, 32, 43,
Reese	44
S	
SCT	11, 25, 35
Silverline	16, 28, 39
Skyjacker	21, 43
Snow Performance	18, 30, 41
STL/Super Swampers	6
Superchips	11, 19, 22, 25, 31, 32, 35, 43
Superlift	21, 32
T	
TCI	19, 20, 31, 42
Tow Ready	45
True Flow	12, 13, 27, 38
U	
Ultra Wheel	6, 7
V	
Valley	45
Volant	13, 27, 38
W	
Warn	45
Z	
Zoom	20, 31

PRODUCT INDEX

A	Page No.
Accumulator Bodies	31
Adaptors 5th wheel	45
Air Filters	13, 27, 37, 38
B	
Boost Coolers	18, 30, 41
Brake Controllers/Adapters	45
Brake Pads	20, 42
C	
Charge Air Manifolds	13, 27
Clutches	20, 31
Cold Air Intakes	13
E	
Electric Fans	18, 30, 41
Engine Balancers	31, 41
Exhaust	15, 16, 17, 28, 39, 40
Exhaust Brakes	20, 31, 42
Exhaust Manifolds	17, 40
Exhaust Tips	17, 29, 31
F	
Filter Restore kits	13, 38
Flexplate	20
Fuel Injectors	13
Fuel Lift Pumps	13
G	
Gauges	5
H	
Head Stud kits	18, 30, 41
Hitches	44
I	
Idle Control	41
Intake Systems	12, 26, 27, 38
Intercooler Tube Upgrade	9
Intercoolers	18, 41
L	
Leveling Kits	21, 43
Load Lifter	21, 43
M	
Main Engine Studs	30
Modules	10, 11, 14, 24, 25, 30, 33, 34
P	
Performance Oil Filters	18, 30, 41
Pintle Mount & Hooks	45
Programmers	8
Propane Injection	18, 30, 41
R	
Ride Rite	21, 43
Ring & Pinions	20, 43
Ring & Pinions Install Kits	20, 43
S	
Shift Enhancer Kits	42
Shocks	21, 43
Short Shifters	19
Speedometer Adjustment Tool	18, 31,
Steering Box Stabilizers	19
Suspensions Systems	21, 43
T	
Techni-Coolers	18, 30
Tirepaq	19
Tires	6
Torque Converters	20, 31, 42
Tow Bars	45
Trans Fluid	19, 31, 42
Transmission Controls	19
Transmission Package	19
Transmission Pans	19, 31, 42
Transmissions	42
Truck Stacks	17
Turbo Accessories	13
V	
Valve Bodies	19, 42
W	
Wastegate	27
Wastegate Actuators	27, 38, 41
Water/Methanol Injection	18, 30
Weight Distributing Hitches	45
Wheels	6
Winch	45

UNIVERSAL IGNITION



"Z" Series Gauges

Part No. Description

- 2616 Boost, 0-35 psi, Mechanical
- 2617 Boost, 0-60 psi, Mechanical
- 2618 Boost, 0-100 psi, Mechanical
- 2636 Differential Temp., 100-250°F, Electric
- 2640 Trans. Temp., 100-250°F, Electric
- 2654 Pyrometer, 0-1600°F, Electric
- 2660 Fuel Pressure, 0-30 psi, Electric
- 2888 Diesel Tach, 5000 RPM, 2 5/8" Pedestal Mount



Sport-Comp Gauges

Part No. Description

- 3304 Boost, 0-35 psi, Mechanical
- 3344 Pyrometer, 0-1600°F, Electric
- 3349 Differential Temp., 100-250°F, Electric
- 3357 Trans. Temp., 100-250°F, Electric



GS Series Gauges

Part No. Description

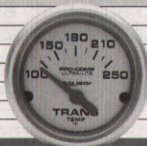
- 3804 Boost, 0-35 psi, Mechanical
- 3805 Boost, 0-60 psi, Mechanical



Ultra-Lite Series Gauges

Part No. Description

- 4304 Boost, 0-35 psi, Mechanical
- 4305 Boost, 0-60 psi, Mechanical
- 4306 Boost, 0-100 psi, Mechanical
- 4344 Pyrometer, 0-1600°F, Electric
- 4349 Differential Temp., 100-250°F, Electric
- 4357 Trans. Temp., 100-250°F, Electric
- 4380 D-PIC, 1/4 mile, reaction, 0-60 times



Ultra-Lite II Series Gauges

Part No. Description

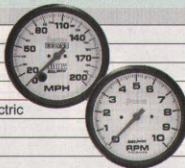
- 4944 Pyrometer, 0-1600°F, Electric
- 4949 Trans. Temp., 100-250°F, Electric
- 4963 Fuel Pressure, 0-100 psi, Electric



Phantom Series Gauges

Part No. Description

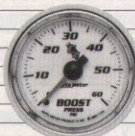
- 5704 Boost, 0-35 psi, Mechanical
- 5705 Boost, 0-60 psi, Mechanical
- 5706 Boost, 0-100 psi, Mechanical
- 5744 Pyrometer, 0-1600°F, Electric
- 5749 Differential Temp., 100-250°F, Electric
- 5757 Trans. Temp., 100-250°F, Electric
- 5760 Fuel Pressure, 0-30 psi, Electric
- 5761 Fuel Pressure, 0-15 psi, Electric



C2 Gauges

Part No. Description

- 7104 Boost, 0-35 psi, Mechanical
- 7105 Boost, 0-60 psi, Mechanical
- 7106 Boost, 0-100 psi, Mechanical
- 7144 Pyrometer, 0-1600°F, Electric
- 7145 Pyrometer, 0-2000°F, Electric
- 7149 Trans. Temp., 100-250°F, Electric
- 7157 Trans. Temp., 100-260°F, Electric
- 7160 Boost, 0-30 psi, Electric
- 7163 Fuel Pressure, 0-100 psi, Electric
- 7170 Boost, 0-60 psi, Electric



Cobalt Gauges

Part No. Description

- 6104 Boost, 0-35 psi, Mechanical
- 6105 Boost, 0-60 psi, Mechanical
- 6144 Pyrometer, 0-1600°F, Electric
- 6145 Pyrometer, 0-2000°F, Electric
- 6149 Trans. Temp., 100-250°F, Electric
- 6157 Trans. Temp., 100-260°F, Electric
- 6160 Boost, 0-30 psi, Electric
- 6161 Fuel Pressure, 0-30 psi, Electric
- 6163 Fuel Pressure, 0-100 psi, Electric
- 6170 Boost, 0-60 psi, Electric
- 6180 D-PIC, 1/4 mile, reaction, 0-60 times



Nexus Gauges

Part No. Description

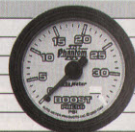
- 6400 Sensor Module & Remote - 8 channel
- 6459 Boost/Vacuum, 30 In. Hg/30 psi
- 6463 Fuel Pressure, 0-100 psi, Electric



Phantom II Series Gauges

Part No. Description

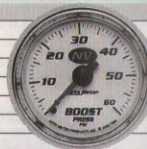
- 7504 Boost, 0-35 psi, Mechanical
- 7505 Boost, 0-60 psi, Mechanical
- 7544 Pyrometer, 0-1600°F, Electric
- 7545 Pyrometer, 0-2000°F, Electric
- 7549 Trans. Temp., 100-250°F, Electric
- 7557 Trans. Temp., 100-260°F, Electric



NV Gauges

Part No. Description

- 7304 Boost, 0-35 psi, Mechanical
- 7305 Boost, 0-60 psi, Mechanical
- 7344 Pyrometer, 0-1600°F, Electric
- 7345 Pyrometer, 0-2000°F, Electric
- 7349 Trans. Temp., 100-250°F, Electric
- 7357 Trans. Temp., 100-260°F, Electric
- 7363 Fuel Pressure, 0-100 psi, Electric



Part No. Description

- 30160 Pyrometer, 0-1500°F, Black Dial
- 30163 Pyrometer, 0-2000°F, Black Dial
- 30300 Trans. Temp., Black Dial
- 30302 Trans. Temp., White Dial
- 30500 Boost, 0-50 psi, Black Dial
- 30502 Boost, 0-100 psi, White Dial
- 30503 Boost, 0-100 psi, Black Dial



Part No. Description

- R3807GR Pyrometer, 100-1500°F, White Face, Black Bezel, Red Pointer
- R5623R Boost, 0-60 psi, Black Face, Black Bezel, Red Pointer
- R5659R Trans. Temp., 100-280°F, Black Face, Black Bezel, Red Pointer
- R6823R Boost, 0-60 psi, White Face, Black Bezel, Red Pointer
- R6859R Trans. Temp., 100-280°F, White Face, Black Bezel, Red Pointer
- RD12 Gauge Kit - 03-07 Dodge Ram, Pyro/Boost/Trans. Temp.





Diesel Gauge Kits

Part No. Description

Dodge

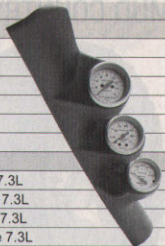
7091	Dual A-Pillar Kit, Z-Series, 98-02 Dodge
7092	Triple A-Pillar Kit, Z-Series, 98-02 Dodge
7094	Dual A-Pillar Kit, Ultra-Lite, 98-02 Dodge
7095	Triple A-Pillar Kit, Ultra-Lite, 98-02 Dodge
7097	Dual A-Pillar Kit, Phantom, 03-07 Dodge
7098	Triple A-Pillar Kit, Phantom, 03-07 Dodge

Ford

7071	Dual A-Pillar Kit, Z-Series, 99-02 Powerstroke 7.3L
7072	Triple A-Pillar Kit, Z-Series, 99-02 Powerstroke 7.3L
7074	Dual A-Pillar Kit, Ultra-Lite, 99-02 Powerstroke 7.3L
7075	Triple A-Pillar Kit, Ultra-Lite, 99-02 Powerstroke 7.3L

GM

7081	Dual A-Pillar Kit, Z-Series, 00-06 GM Duramax 6.6L
7084	Dual A-Pillar Kit, Ultra-Lite, 00-06 GM Duramax 6.6L



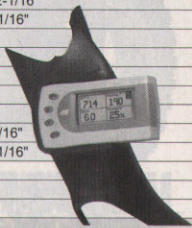
Auto Meter GAUGE WORKS

Gauge Pods

Part No. Description

Dodge

13002	Edge Attitude Overhead Console - 03-08 Dodge
13005	Edge Attitude Pillar Mount - 03-07 Dodge, Black
13006	Edge Attitude Pillar Mount - 03-07 Dodge, Taupe
13008	Edge Attitude Pillar Mount - 98-02 Dodge w/speaker
13009	Edge Attitude Pillar Mount - 98-02 Dodge w/o speaker
15002	Triple Dash Pod, 98-02 Dodge, 2-1/16"
15020	Triple Dash Pod, 03-07 Dodge, 2-1/16"
15012	Single Steering Column Pod, 94-02 Dodge, 2-1/16"
15013	Single Steering Column Pod, 03-08 Dodge, 2-1/16"
15014	Dual Steering Column Pod, 03-08 Dodge, 2-1/16"
15021	Quad Console Pod, 03-05 Dodge, 2-1/16"
17200	Dual Pillar Pod, 94-97 Dodge, 2-1/16"
17201	Triple Pillar Pod, 94-97 Dodge, 2-1/16"
17202	Dual Pillar Pod, 98-02 Dodge, 2-1/16"
17203	Triple Pillar Pod, 98-02 Dodge, 2-1/16"
17204	Dual Pillar Pod, 98-02 Dodge w/speaker, 2-1/16"
17205	Triple Pillar Pod, 98-02 Dodge w/speaker, 2-1/16"
15212	Single Pillar Pod, 03-08 Dodge, 2-1/16"
17212	Dual Pillar Pod, 03-08 Dodge, 2-1/16"
17213	Triple Pillar Pod, 03-08 Dodge, 2-1/16"



Ford

13000	Edge Attitude Pillar Pod, 99-02 Super Duty
13001	Edge Attitude Pillar Pod, 03-07 Super Duty
13002	Edge Attitude Overhead Console - 99-04 Super Duty
15003	Instrument Cluster Bezel, 99-04 Super Duty, 2-1/16"
15010	Single Steering Column Pod, 99-04 Super Duty Auto., 2-1/16"
15016	Triple Dash Pod, 99-04 Super Duty, 2-1/16"
15018	Triple Under-Dash Pod, 99-04 Super Duty, 2-1/16"
15306	Dual Pod, 99-02 Super Duty, 2-1/16"
15307	Single Pod, 99-02 Super Duty, 2-1/16"
15318	Single Pod, 03-07 Super Duty, 2-1/16"
17306	Dual Pillar Pod, 99-07 Super Duty, 2-1/16"
17307	Triple Pillar Pod, 99-07 Super Duty, 2-1/16"
17308	Quad Pillar Pod, 99-07 Super Duty, 2-1/16"
17312	Dual Pillar Pod, 08-09 Super Duty, 2-1/16"
17313	Triple Pillar Pod, 08-09 Super Duty, 2-1/16"
18016	Dual Overhead Console, 99-04 Super Duty, 2-1/16"
18017	Triple Overhead Console, 99-04 Super Duty, 2-1/16"
18018	Quad Overhead Console, 99-04 Super Duty, 2-1/16"

GM

13003	Edge Attitude Mount, 99-05 GM 6.6L Duramax
13004	Edge Attitude Mount, 99-05 GM 6.6L Duramax, w/Speaker
15007	Single Steering Column Pod, 00-03 GM 6.6L Duramax, 2-1/16"
17104	Dual Pillar Pod, 00-06 GM 6.6L Duramax, 2-1/16"
17105	Triple Pillar Pod, 00-06 GM 6.6L Duramax, 2-1/16"
17106	Dual Pillar Pod, 00-06 GM 6.6L Duramax, 2-1/16" w/Speaker
17107	Triple Pillar Pod, 00-06 GM 6.6L Duramax, 2-1/16" w/Speaker
17115	Dual Pillar Pod, 07-08 GM 6.6L Duramax, 2-1/16"
17116	Triple Pillar Pod, 07-08 GM 6.6L Duramax, 2-1/16"
17117	Dual Pillar Pod, 07-08 GM 6.6L Duramax, 2-1/16" w/Speaker
17118	Triple Pillar Pod, 07-08 GM 6.6L Duramax, 2-1/16" w/Speaker

VEHICLE SPECIFIC IGNITIONS



BULLY DOG

Outlook Monitor and Mounts



Part No. Description

Dodge

32300	Outlook Pillar Pod, 03-07 Dodge, Black
32303	Outlook Pillar Pod, 03-07 Dodge, Taupe
40266	Outlook Monitor, 03-05 Dodge Cummins
40268	Outlook Monitor, 01-02 Dodge Cummins

Ford

40166	Outlook Triple Dog Monitor
40173	Outlook Monitor - 99-03 Powerstroke 7.3L
31300	Outlook Pillar Mount - 99-02 Super Duty
31301	Outlook Pillar Mount - 03-07 Super Duty

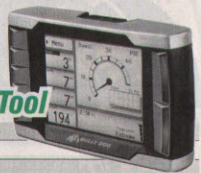
GM

40166	Outlook Triple Dog Monitor
40366	Outlook Monitor - 01-05 GM 6.6L Duramax LB7/LLY
33300	Outlook Pillar Mount w/Speaker - 01-07 GM 6.6L Duramax
33301	Outlook Pillar Mount - 01-07 GM 6.6L Duramax



BULLY DOG

Performance Management Tool



Part No. Description

40300	Performance Management Tool (PMT)
-------	-----------------------------------

Ford

31302	PMT Pillar Mount - 03-07 Super Duty
31303	PMT Dash Mount - 08-09 Super Duty

GM

33302	PMT Pillar Mount w/Speaker - 01-07 GM 6.6L Duramax LB7/LLY/LBZ
33305	PMT Pillar Mount w/Speaker - 07-08 GM 6.6L Duramax



X-Monitor and Accessories



Part No. Description

1081130	Low Fuel Pressure LED Alarm Kit - Red
1081133	Low Fuel Pressure LED Alarm Kit - Amber
1081150	Cool Down Timer Kit
1081151	Thermocoupler Probe Kit, Cool Down Timer

Dodge

1085210	X-Monitor 3-In-1 Kit, 98-02 Dodge
1085220	X-Monitor 3-In-1 Kit, 03-08 Dodge

Ford

1087001	X-Monitor, 03-07 Powerstroke 6.0L
1087200	X-Monitor 3-In-1 Kit, 99-02 Super Duty
1087210	X-Monitor 3-In-1 Kit, 03-07 Super Duty

GM

1086210	X-Monitor 3-In-1 Kit, 01-06 GM 6.6L Duramax
---------	---



Accessories

Part No. Description

3279	Fuel Pressure Snubber/ Restrictor
9114	LED Lighting Dimmer Switch
9201	Battery Extender, 12 Volt

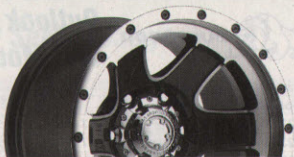


GM/DODGE WHEELS & TIRES

Nomad
WHEEL

NOMAD

174 Series Gray w/Diamond Cut

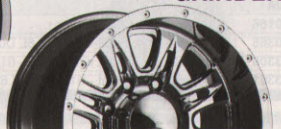


MAKO

243 Series Chrome



GRINDER

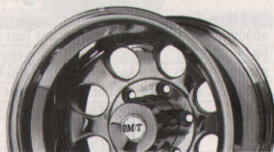


PREDATOR 8



214 Series Black w/Diamond Cut

286 Series Chrome



Classic II Polished

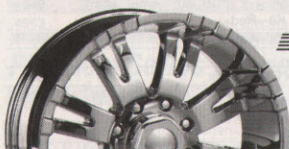
M/T MICKEY THOMPSON PERFORMANCE WHEELS



Sidebiter Black

RBP
ROLLING BIG POWER™

RBP-3 Black



6001 Series Chrome

PRO-COMP WHEELS
Pro Competition Tire Company



6089 Series Chrome



MUD COUNTRY

Dick
CEPEK



FC-II

PRO-COMP TIRES
Pro Competition Tire Company



XTREME M/T



XTERRAIN



SS-M16



BAJA CLAW RADIAL



BAJA CLAW



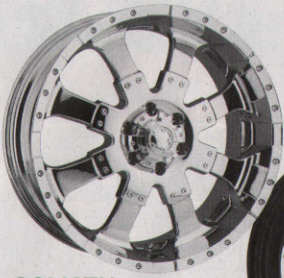
MTZ



ATZ

Get Your Wheels & Tires Ready To Roll!

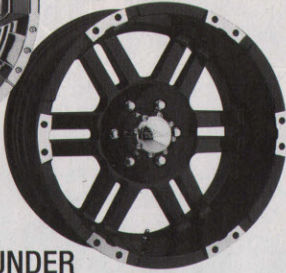
Mounted and Balanced with Hardware.



GOLIATH

224 Series Chrome

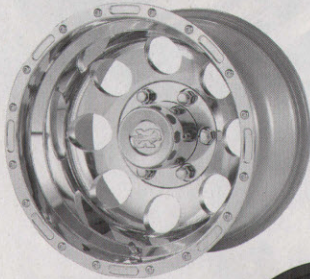
Ultra WHEEL



THUNDER

247 Series Black

PRO-COMP WHEELS Pro Competition Tire Company



1079 Series Polished

XD SERIES

XD798 Series Black



MUD COUNTRY

Dick CEPEK

FC-II



PRO-COMP TIRES Pro Competition Tire Company



XTERRAIN

XTREME M/T



SS-M16



BAJA CLAW RADIAL



BAJA CLAW



MTZ



ATZ



Get Your Wheels & Tires Ready To Roll!

Mounted and Balanced with Hardware.

EDGE PRODUCTS

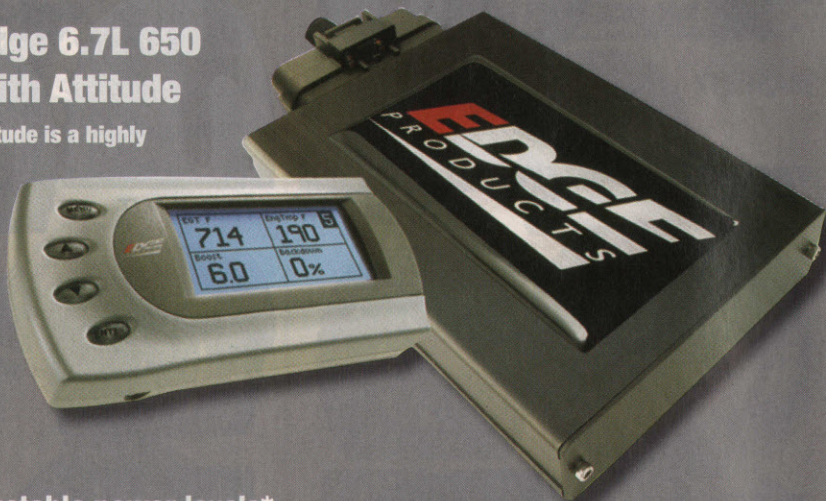
JUICE

PLUG-IN MODULE

Dodge

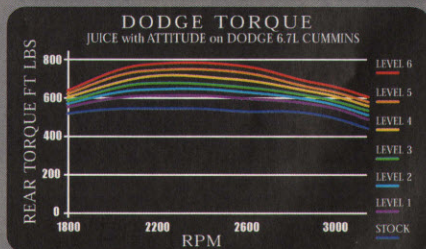
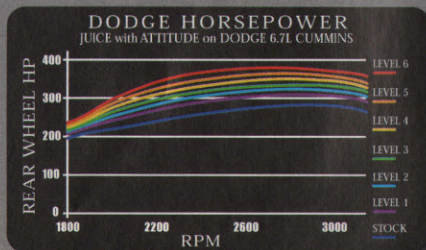
2007-2008 Dodge 6.7L 650 Series Juice with Attitude

The Edge Juice with Attitude is a highly sophisticated package capable of dramatically improving your truck's driveability, towing, mileage and, most importantly, **POWER.**



KEY FEATURES:

- 6 on-the-fly adjustable power levels*
- Up to an additional 100 HP*
- Increase torque up to 250 ft. lbs.*
- Includes Turbo Timer
- Retrieves and clears trouble codes
- Displays transmission temp
- Adjustable low-end responsiveness
- Provides cold engine protection
- Automatic defueling for excessive EGT, turbo boost, and transmission slippage
- Performance testing: Captures 0-60 and quarter-mile performance tests



More Applications Available

Intercooler Tube Upgrade

Dodge Ram Cummins

2500/3500/4500 & Sterling Bullet

2007.5-UP L6-6.7L (td)



45%
FLOW INCREASE

+20
HORSEPOWER
@ 1750 RPM

+63
lbs. X ft torque
@ 1750 RPM

Features

- High Performance
- 5-ply heavy duty couplings
- Constant tension bolt clamps

Benefits

- Increased MPG
- Increased Flow
- Less restriction
- Lower EGTs

Kit

INCLUDES:

- Intercooler tube (1)
- 5-ply couplings (2)
- T-bolt clamps (4)



Available Upgrades

Air Intake Systems:

Stage 2 air intake

- Part No. 7511342

Stage 2 Si air intake

- Part No. 7581342

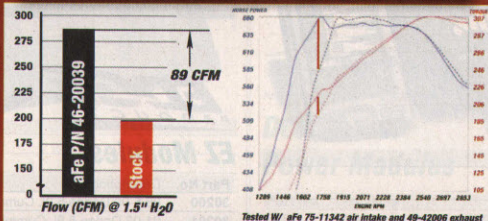
Exhaust Systems:

DPF-Back exhaust

- Part No. 4942006

Performance Data

aFe vs. Stock



	Part No.	Box Size	Weight	Install Time
Intercooler Tube Upgrade	4620039	17" x 9" x 11"	6lbs.	45 min.

DODGE MODULES



BULLY DOG

WatchDog

Part No.	Description
40400	WatchDog Monitor - White
40402	WatchDog Monitor - Black



BULLY DOG

Triple Dog GT

Part No.	Description
40420	Triple Dog GT for Diesel Vehicles



BULLY DOG

Triple Dog Power Pup

Part No.	Description
40502	Triple Dog Power Pup for Diesel Vehicles
42500	Triple Dog Diesel w/Outlook Monitor



BULLY DOG

Triple Dog E3

Part No.	Description
40505	Triple Dog E3 for Diesel Vehicles



BULLY DOG

Power Pup Downloader

Part No.	Description
42573	Power Pup - Dodge 03-07 5.9L, 07-08 6.7L



Six-Gun Diesel Tuners

Part No.	Description
61046	Six-Gun diesel tuner with PowerPDA docking station, 03-05 5.9L
61050	Six-Gun diesel tuner with PowerPDA docking station, 06-07 5.9L
62981	Speed-Loader - 03-05 Dodge 5.9L
63797	Six-Gun Diesel Tuner w/ Speed Locker 06-07 Dodge 5.9L



DIABLOSPORT
GASOLINE AND DIESEL TUNING SYSTEMS

Power Puck

Part No.	Description
D7153	98.5-2000 5.9L Cummins
D7154	2001 5.9L Cummins
D7156	2003-2004 5.9L Cummins
D7157	2004-2004.5 - 5.9L /24V Cummins
D7159	2004.5-2007 - 5.9L /24V Cummins



DIABLOSPORT
GASOLINE AND DIESEL TUNING SYSTEMS

Extreme Power Puck

Part No.	Description
P1000	03-04 Dodge 5.9L Cummins
P1010	04.5-05 Dodge 5.9L Cummins
P1020	06-07 Dodge 5.9L Cummins



DIABLOSPORT
GASOLINE AND DIESEL TUNING SYSTEMS

Predator Tuners

Part No.	Description
U7130	03-05 Dodge 5.9L Cummins
U7131	06-07 Dodge 5.9L Cummins
U7777	PC Interface Kit - Serial
U7778	PC Interface Kit - USB



Juice Modules with Attitude Monitor

Part No.	Description
30100	98.5-00 Dodge 5.9L Cummins
30101	01-02 Dodge 5.9L Cummins
30103	03-04 Dodge 5.9L Cummins
30104	04.5-05 Dodge 5.9L Cummins
30106	06-07 Dodge 5.9L Cummins
30107	07-08 Dodge 6.7L Cummins



EZ Modules

Part No.	Description
30200	98.5-00 Dodge 5.9L Cummins
30201	01-02 Dodge 5.9L Cummins
30203	03-04 Dodge 5.9L Cummins
30204	04.5-05 Dodge 5.9L Cummins





Comp Modules

Part No.	Description
30300	98.5-00 Dodge 5.9L Cummins
30301	01-02 Dodge 5.9L Cummins



Mileage Max

Part No.	Description
30400	98.5-00 Dodge 5.9L Cummins
30401	01-02 Dodge 5.9L Cummins
30403	03-04 Dodge 5.9L Cummins
30404	04.5-07 Dodge 5.9L Cummins



Attitude Monitor and Mounts

Part No.	Description
33001	Attitude Monitor - 03-04 Dodge 5.9L Cummins
33005	Attitude Monitor - 07-08 Dodge 6.7L Cummins
38305	Dash Mount Pod - 06-08 Dodge Ram
38400	Pillar Pod - 98.5-02 Dodge Ram (w/Speaker Hole)
38401	Pillar Pod - 98.5-02 Dodge Ram (w/o Speaker Hole)
38402	Pillar Pod - 03-08 Dodge Ram



Insight Monitor

Part No.	Description
83400	INSIGHT Universal Digital Gauge Display
98600	INSIGHT Thermocouple (EGT Probe)



Max Energy Modules

Part No.	Description
52003	2003 Ram 2500/3500 5.9 Cummins
52004	2004 Ram 2500/3500 5.9 Cummins
52005	2005 Ram 2500/3500 5.9 Cummins
52006	2006 Ram 2500/3500 5.9 Cummins
52007	2007 Ram 2500/3500 5.9 Cummins
52008	98.5-02 Ram 2500/3500 5.9 Cummins
52009	2007-2008 Ram 2500-5500 6.7 Cummins



The World Leader in High-Performance Engine Tuning For Computer-Controlled Vehicles

Max Energy E-CON Modules

Part No.	Description
53003	2003 Ram 2500/3500 5.9 Cummins
53004	2004 Ram 2500/3500 5.9 Cummins
53006	2006 Ram 2500/3500 5.9 Cummins
53007	2007 Ram 2500/3500 5.9 Cummins
53008	98.5-02 Ram 2500/3500 5.9 Cummins
53009	2007-2008 Ram 2500-5500 6.7 Cummins



Performance Modules

Part No.	Description
2005	2001 Dodge Cummins, Stage II
2012	03-04 Dodge Cummins, Stage II
2020	03-04 Dodge Cummins, Adjustable



Mileage XS Programmers

Part No.	Description
3506	03-08 Dodge Ram Diesel



Flashpaq

Part No.	Description
3805	98.5-07 Dodge Ram 5.9L Diesel Pickups
3808	07-08 Dodge 6.7L Diesel Pickup



Cortex Programmers

Part No.	Description
3950	All Dodge Ram Cummins Diesel Pickups



DCX Thrust Power Modules

Part No.	Description
5201	DCX Thrust Device - 1998 - 2002 Cummins Diesel
5202	DCX Thrust Device - 2003 - 2007 Cummins Diesel
5200	Multi-Program Add-On Module





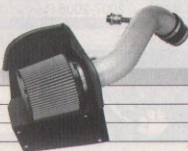
Pro Dry S Intake Systems

Part No.	Description
5110071	94-02 Cummins L6 5.9L, Type Cx, Stage 1
5110072	94-02 Cummins L6 5.9L, Type Cx, Stage 2
5110412	03-07 Cummins L6 5.9L, Type Cx, Stage 2
5110811	03-07 Cummins L6 5.9L, Type EZ, Stage 2
5110932	03-07 Cummins L6 5.9L, Type XP, Stage 2
5131342	07-08 Cummins L6 6.7L, Type Cx, Stage 2



Pro 5 R Intake Systems

Part No.	Description
5410071	94-02 Cummins L6 5.9L, Type Cx, Stage 1
5410072	94-02 Cummins L6 5.9L, Type Cx, Stage 2
5410412	03-07 Cummins L6 5.9L, Type Cx, Stage 2
5430811	03-07 Cummins L6 5.9L, Type EZ, Stage 2
5431342	07-08 Cummins L6 6.7L, Type Cx, Stage 2
5410079	Torque Booster Tube, 94-02 5.9L Cummins
5410419	Torque Booster Tube, 03-06 5.9L Cummins



Pro Guard 7 Intake Systems

Part No.	Description
7510071	94-02 Cummins L6 5.9L, Type Cx, Stage 1
7510072	94-02 Cummins L6 5.9L, Type Cx, Stage 2
7510073	94-02 Cummins L6 5.9L, Stage 2
7510412	03-07 Cummins L6 5.9L, Type Cx, Stage 2
7510811	03-07 Cummins L6 5.9L, Type EZ, Stage 2
7510932	03-07 Cummins L6 5.9L, Type XP, Stage 2
7580932	03-07 Cummins L6 5.9L, Type Si, Stage 2 w/Value Pack
7580933	03-07 Cummins L6 5.9L, Type Si, Stage 2
7511343	03-08 Cummins L6 5.9/6.7L, Stage 2
7511342	07-08 Cummins L6 6.7L, Type XP, Stage 2
7531342	07-08 Cummins L6 6.7L, Type Cx, Stage 2



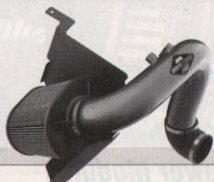
Brute Force Induction Systems

Part No.	Description
218204DC	98-02 Dodge 5.9L Cummins, Silver
218204DP	98-02 Dodge 5.9L Cummins, Polished
218206DC	03-04 Dodge 5.9L Cummins, Silver
218206DP	03-04 Dodge 5.9L Cummins, Polished
218211DC	05-06 Dodge 5.9L Cummins, Silver
218211DP	05-06 Dodge 5.9L Cummins, Polished



Brute Force HD Induction Systems

Part No.	Description
219210DC	94-02 Dodge 5.9L Cummins, Silver
219210DP	94-02 Dodge 5.9L Cummins, Polished
219211DC	03-06 Dodge 5.9L Cummins, Silver
219211DP	03-06 Dodge 5.9L Cummins, Polished
219221DS	07-08 Dodge 6.7L Cummins, Black



Intake Systems

Part No.	Description
300128	03-04 Dodge 5.9L Cummins, Quick Fit
300147	03-04 Dodge 5.9L Cummins, Quick Fit w/Tube
300155	04-07 Dodge 5.9L Cummins, Quick Fit
300159	04-07 Dodge 5.9L Cummins, Quick Fit w/Tube
300209	07-08 Dodge 6.7L Cummins, Cool Air Dam
300221	07-08 Dodge 6.7L Cummins, MXP
300259	04-07 Dodge 5.9L Cummins, MXP



RFI Cold Air Intakes

Part No.	Description
52100	94-02 Dodge 5.9L Cummins
52101	03-07 Dodge 5.9L Cummins, w/Air Box



High-Ram Air Intake Kits

Part No.	Description
42721	01-02 Dodge 5.9L Cummins
42726	03-07 Dodge 5.9L Cummins, stock intercooler



Cold Air Intake Kits

Part No.	Description
2553	94-02 Dodge 5.9L Cummins
2554	03-07 Dodge 5.9L Cummins



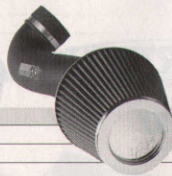
Power-Flow Air Intake Systems

Part No.	Description
PF8075P	03-07 Dodge 5.9L Diesel, Polished
PF8075WB	03-07 Dodge 5.9L Diesel, Black Wrinkle

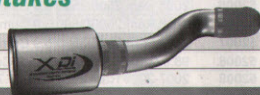


High Performance Intake Systems

Part No.	Description
571525	94-02 Dodge 5.9L Cummins
571532	03-07 Dodge 5.9L Cummins
631557	07-08 Dodge 6.7L Cummins

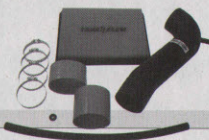


Part No.	Description
30707	03-07 Dodge 5.9L Cummins
30710	07-09 Dodge 6.7L Cummins



Sealed Air Intake System

Part No.	Description
30507	06-07 Dodge 5.9L Cummins



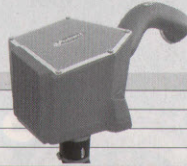
Powercore Intake Systems

Part No.	Description
168676	07-08 Dodge 6.7L Cummins



Cold Air Intake Kits

Part No.	Description
16559	05-07 Dodge 5.9L Cummins
16659	96-02 Dodge 5.9L Cummins
16759	03-07 Dodge 5.9L Cummins
16867	07-08 Dodge 6.7L Cummins



Pro 5 R Replacement Air Filters

Part No.	Description
3010011	94-02 Dodge 5.9L Cummins
3010102	03-06 Dodge 5.9L Cummins
3080011	94-02 Dodge 5.9L Cummins, Super Stock



Pro Guard 7 Replacement Air Filters

Part No.	Description
7310011	94-02 Dodge 5.9L Cummins
7310102	03-06 Dodge 5.9L Cummins
7380011	94-02 Dodge 5.9L Cummins, Super Stock
7380102	03-06 Dodge 5.9L Cummins, Super Stock



Air Filter Recharge Kits

Part No.	Description
9050000	Aerosol Restore Kit, Gold
9050001	Aerosol Restore Kit, Blue



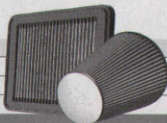
Dryflow Performance Panel Filters

Part No.	Description
2820056DK	94-02 Dodge 5.9L Cummins
2820776DK	03-07 Dodge 5.9L Cummins



High Performance Air Filters

Part No.	Description
332056	94-02 Dodge 5.9L Cummins
E0776	03-07 Dodge 5.9L Cummins
E0784	07-09 Dodge 5.9L Cummins



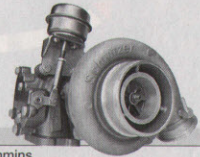
Replacement Air Filters

Part No.	Description
30200	03-09 Dodge 5.9L Diesel
30204	94-02 Dodge 5.9L Diesel



Turbos & Accessories

Part No.	Description
1045120	Super B Special - 94-02 Dodge 5.9L Cummins
1045220	Super B Single - 94-02 Dodge 5.9L Cummins
1045230	Super B Single - 03-04 Dodge 5.9L Cummins
1045235	Super B Single - 04-05 Dodge 5.9L Cummins
1047150	Wastegate Kit - 94-98 Dodge HX35 Turbo
1047154	Wastegate Kit - 03-07 Dodge 5.9L Cummins



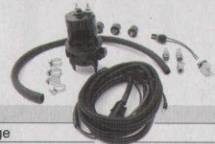
BladeRunner™ Charge Air Manifolds

Part No.	Description
4610011	03-07 Dodge 5.9L Cummins
4610021	98.5-02 Dodge 5.9L Cummins



Fuel Lift Pumps

Part No.	Description
1050227	Lift Pump Kit, OEM Bypass - 03-04 Dodge
1050229	Lift Pump Kit, OEM Bypass - 00-02 Dodge



Fuel Injectors

Part No.	Description
1075941	98-02 Dodge 5.9L Cummins - 90 HP
1075943	98-02 Dodge 5.9L Cummins - 130 HP
1075944	98-02 Dodge 5.9L Cummins - 155 HP



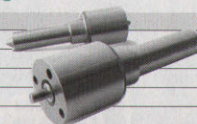
Jammer Fuel Injectors

Part No.	Description
37101	98.5-02 Dodge 5.9L Cummins - Stage 1
37102	98.5-02 Dodge 5.9L Cummins - Stage 2
37103	98.5-02 Dodge 5.9L Cummins - Stage 3
37104	98.5-02 Dodge 5.9L Cummins - Stage 4
37105	98.5-02 Dodge 5.9L Cummins - Stage 5

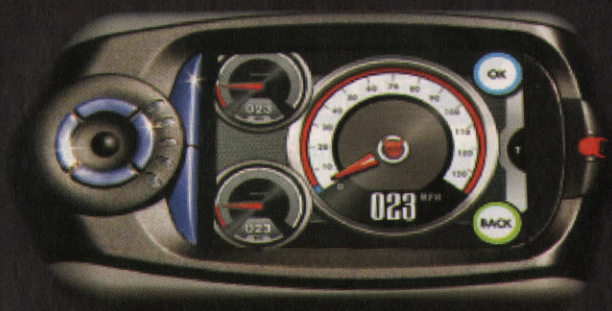


Jammer Fuel Injector Nozzles

Part No.	Description
37001	98.5-02 Dodge 5.9L Cummins - Stage 1
37002	98.5-02 Dodge 5.9L Cummins - Stage 2
37003	98.5-02 Dodge 5.9L Cummins - Stage 3
37004	98.5-02 Dodge 5.9L Cummins - Stage 4
37005	98.5-02 Dodge 5.9L Cummins - Stage 5



Trinity™



Most advanced tuning module on the market

T1000 one part for all applications

- The TRINITY is one of the most advanced devices of its kind on the market featuring: Color touch screen, Advanced data acquisition, Customizable gauges, and Full reflash/reprogram capability.
- All this included for one price (no hidden fees like our competition) and housed in a slim, custom styled, easy to use unit!

DIABLOSPORT®
GASOLINE AND DIESEL TUNING SYSTEMS



MAGNAFLOW

Performance EXHAUST

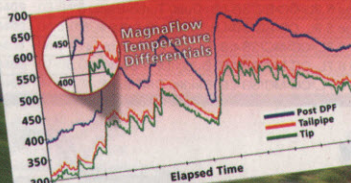
DIESEL PARTICULATE FILTER-BACK

By **MAGNAFLOW**
Performance Exhaust



100% Stainless Steel • Lifetime Warranty

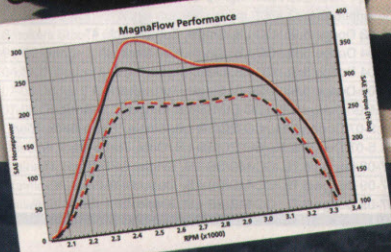
MagnaFlow 4" Single Exit w/ Venturi Intercooled Tip



DIESEL TRUCKS & SUV'S

By **MAGNAFLOW**
Performance Exhaust

Up to 11HP and 35 Ft.-Lbs. Gain on 6.0L Ford Powerstroke

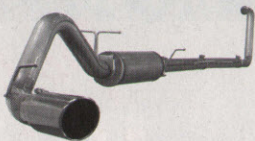


100% Stainless Steel • Lifetime Warranty

DODGE EXHAUST



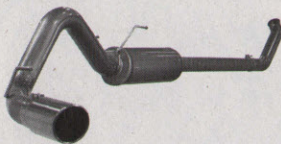
Large Bore HD 4" Exhaust Systems



Part No.	Description
4912001	94-02 Dodge Cummins 5.9L
4912005	03-04 Dodge Cummins 5.9L, Cat-Back
4912003	03-04 Dodge Cummins 5.9L, Turbo-Back
4912002	04.5-07 Dodge Cummins 5.9L, Cat-Back
4912004	04.5-07 Dodge Cummins 5.9L, Turbo-Back
4912006	07-09 Dodge Cummins 6.7L, DPF-Back



Mach Force XP Exhaust Systems



Part No.	Description
4942001	94-02 Dodge Cummins 5.9L
4942005	03-04 Dodge Cummins 5.9L, Cat-Back
4942003	03-04 Dodge Cummins 5.9L, Turbo-Back
4942002	04.5-07 Dodge Cummins 5.9L, Cat-Back
4942004	04.5-07 Dodge Cummins 5.9L, Turbo-Back
4942006	07-09 Dodge Cummins 6.7L, DPF-Back



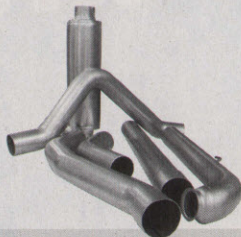
Stainless Exhaust Systems



Part No.	Description
DS101	94-02 Dodge Cummins 5.9L, Single, Turbo-Back, 4"
DS104	94-02 Dodge Cummins 5.9L, Dual, Turbo-Back, 4"
DS103	03-04 Dodge Cummins 5.9L, Single, Turbo-Back, 4"
DS102	03-04 Dodge Cummins 5.9L, Dual, Turbo-Back, 4"
DS105	04.5-07 Dodge Cummins 5.9L, Single, Turbo-Back, 4"
DS106	04.5-07 Dodge Cummins 5.9L, Dual, Turbo-Back, 4"
DS107	04.5-07 Dodge Cummins 5.9L, Single, Turbo-Back, 5"



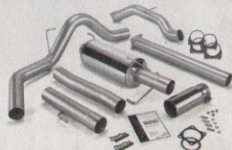
Rapid Flow Exhaust Systems



Part No.	Description
182010	94-02 Dodge 5.9L Cummins, Aluminized, Single Turbo-Back, 4"
182222	94-02 Dodge 5.9L Cummins, Aluminized, Dual Turbo-Back, 4"
182445	94-02 Dodge 5.9L Cummins, 409 Stainless, Single Turbo-Back, 4"
182020	94-02 Dodge 5.9L Cummins, Aluminized, Single Turbo-Back, 5"
182012	94-02 Dodge 5.9L Cummins, Downpipe
182050	03-04 Dodge 5.9L Cummins, Aluminized, Single Turbo-Back, 4"
182021	03-04 Dodge 5.9L Cummins, Aluminized, Single Turbo-Back, 5"
182447	04.5-07 Dodge 5.9L Cummins, 409 Stainless, Single Cat-Back, 4"
182022	04.5-07 Dodge 5.9L Cummins, Aluminized, Single Cat-Back, 5"
182411	07-09 Dodge 6.7L Cummins, 409 Stainless, Single DPF-Back, 5"



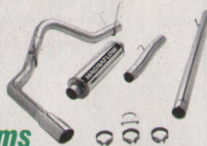
Monster Exhaust Systems



Part No.	Description
48640	03-04 Dodge 5.9L, RC-LB/CC-SB, Single w/cat
48641	03-04 Dodge 5.9L, RC-LB/CC-SB, Single w/o cat
48643	03-04 Dodge 5.9L, CC-LB, Single w/o cat
48702	03-04 Dodge 5.9L, RC-LB/CC-SB, Dual w/cat
48700	04-07 Dodge 5.9L, RC-LB/CC-SB, Single
48701	04-07 Dodge 5.9L, CC-LB, Single
48706	04-07 Dodge 5.9L, RC-LB/CC-SB, Dual
48707	04-07 Dodge 5.9L, CC-LB, Dual
48708	06-07 Dodge 6.7L, Mega Cab, Single
48709	06-07 Dodge 6.7L, Mega Cab, Dual



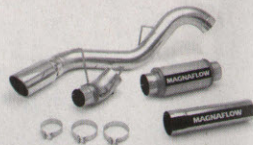
Performance Polished SS Exhaust Systems



Part No.	Description
15910	98-02 Dodge 5.9L, CC-LB, Single, Turbo-Back, 4"
15957	03-04 Dodge 5.9L, CC-LB, Single, Cat-Back, 4"
15968	03-04 Dodge 5.9L, CC-LB, Single, Turbo-Back, 4"
15986	04.5-07 Dodge 5.9L, CC-EC/SB-LB, Single, Turbo-Back, 5"
15987	04.5-07 Dodge 5.9L, CC-EC/SB-LB, Dual, Turbo-Back, 5"
16955	04.5-07 Dodge 5.9L, CC-EC/SB-LB, Single, Cat-Back, 5"
16973	07-09 Dodge 6.7L, CC-MC/SB-LB, Single, DPF-Back, 4"
16974	07-09 Dodge 6.7L, CC-MC/SB-LB, Dual, DPF-Back, 4"
16975	07-09 Dodge 6.7L, CC-MC/SB-LB, Single, DPF-Back, 5"



XL Series SS Exhaust Systems w/ Tip



Part No.	Description
15924	98-02 Dodge 5.9L, CC-LB, Single, Turbo-Back, 4"
15958	03-04 Dodge 5.9L, CC-LB, Single, Cat-Back, 4"
15974	03-04 Dodge 5.9L, CC-LB, Single, Turbo-Back, 4"
15989	04.5-07 Dodge 5.9L, CC-EC/SB-LB, Single, Turbo-Back, 5"
15990	04.5-07 Dodge 5.9L, CC-EC/SB-LB, Dual, Turbo-Back, 5"
16956	04.5-07 Dodge 5.9L, CC-EC/SB-LB, Single, Cat-Back, 5"
16970	07-09 Dodge 6.7L, CC-MC/SB-LB, Single, DPF-Back, 4"
16972	07-09 Dodge 6.7L, CC-MC/SB-LB, Single, DPF-Back, 5"



Pro Series SS Exhaust Systems No Tip



Part No.	Description
17924	98-02 Dodge 5.9L, CC-LB, Single, Turbo-Back, 4"
17958	03-04 Dodge 5.9L, CC-LB, Single, Cat-Back, 4"
17973	03-04 Dodge 5.9L, CC-LB, Dual, Turbo-Back, 4"
17974	03-04 Dodge 5.9L, CC-LB, Single, Turbo-Back, 4"
17956	04.5-07 Dodge 5.9L, CC-EC/SB-LB, Single, Cat-Back, 5"
17989	04.5-07 Dodge 5.9L, CC-EC/SB-LB, Single, Turbo-Back, 5"
17990	04.5-07 Dodge 5.9L, CC-EC/SB-LB, Dual, Turbo-Back, 5"
17970	07-09 Dodge 6.7L, CC-MC/SB-LB, Single, DPF-Back, 4"
17971	07-09 Dodge 6.7L, CC-MC/SB-LB, Dual, DPF-Back, 4"
17972	07-09 Dodge 6.7L, CC-MC/SB-LB, Single, DPF-Back, 5"



Installer Series Exhaust Systems



GOOD!

Part No.	Description
S6100AL	94-02 Dodge 5.9L, Single, Turbo-Back, 4"
S6102AL	94-02 Dodge 5.9L, Cool Duals™, Turbo-Back, 4"
S6112AL	94-02 Dodge 5.9L, Single, Turbo-Back, 5"
S6104AL	03-04 Dodge 5.9L, Single, Turbo-Back, 4"
S6114AL	03-04 Dodge 5.9L, Single, Turbo-Back, 5"
S6108AL	04-5-07 Dodge 5.9L, Single, Cat-Back, 4"
S6110AL	04-5-07 Dodge 5.9L, Cool Duals™, Cat-Back, 4"
S6116AL	04-5-07 Dodge 5.9L, Single, Turbo-Back, 5"
S6118AL	04-5-07 Dodge 5.9L, Single, Cat-Back, 5"
S6120AL	07-08 Dodge 6.7L, Single, Filter-Back, 4"
S6122AL	07-08 Dodge 6.7L, Cool Duals™, Filter-Back, 4"



XP Series Exhaust Systems



BETTER!

Part No.	Description
S6100409	94-02 Dodge 5.9L, Single, Turbo-Back, 4"
S6102409	94-02 Dodge 5.9L, Cool Duals™, Turbo-Back, 4"
S6104409	03-04 Dodge 5.9L, Single, Turbo-Back, 4"
S6106409	03-04 Dodge 5.9L, Cool Duals™, Turbo-Back, 4"
S6108409	04-5-07 Dodge 5.9L, Single, Cat-Back, 4"
S6110409	04-5-07 Dodge 5.9L, Cool Duals™, Cat-Back, 4"
S6120409	07-08 Dodge 6.7L, Single, Filter-Back, 4"
S6122409	07-08 Dodge 6.7L, Cool Duals™, Filter-Back, 4"



Pro Series Exhaust Systems



BEST!

Part No.	Description
S6100304	94-02 Dodge 5.9L, Single, Turbo-Back, 4"
S6108304	04-5-07 Dodge 5.9L, Single, Cat-Back, 4"
S6110304	04-5-07 Dodge 5.9L, Cool Duals™, Cat-Back, 4"
S6120304	07-08 Dodge 6.7L, Single, Filter-Back, 4"
S6122304	07-08 Dodge 6.7L, Cool Duals™, Filter-Back, 4"



Smokers Truck Stacks



Part No.	Description
B1410	Smokers Stack - 4" Angle Cut, 36" Length, T304 Stainless, 1 pc.
B1430	Smokers Stack - 4" Turn Out, 36" Length, T304 Stainless, 1 pc.
B1440	Smokers Stack - 4" Turn Out, 48" Length, T304 Stainless, 1 pc.
B1510	Smokers Stack - 5" Straight Cut, 36" Length, T304 Stainless, 1 pc.
B1530	Smokers Stack - 5" Angle Cut, 36" Length, T304 Stainless, 1 pc.
B1540	Smokers Stack - 5" Angle Cut, 48" Length, T304 Stainless, 1 pc.
B1610	Smokers Stack - 6" Angle Cut, 36" Length, T304 Stainless, 1 pc.
S8100409	94-02 Dodge 5.9L, Dual Stack System, Cat-Back
S8102409	04-5-07 Dodge 5.9L, Dual Stack System, Cat-Back
S8108409	07-08 Dodge 6.7L, Single Stack System, Filter-Back, Crew Cab
S8110409	07-08 Dodge 6.7L, Single Stack System, Filter-Back, Mega Cab
BB0001	Checker Plate to cover T-Pipe, 94-02 Dodge 5.9L
BB0002	Checker Plate to cover T-Pipe, 03-07 Dodge 5.9L
KT1001	Stainless Steel Mounting Kit w/Hardware, 94-02 Dodge
KT1002	Stainless Steel Mounting Kit w/Hardware, 03-07 Dodge
UT1001	Universal "T" Pipe Kit, T409 Stainless

DODGE EXHAUST



Exhaust Pipes & Accessories



Part No.	Description
DAL405	4" Aluminized Down Pipe, Dodge 5.9L
DAL417	Catalytic Converter Test Pipe, Aluminized
DS9417	Catalytic Converter Test Pipe, Stainless
HG6100	Rear Frame Hanger Assembly, 94-97 Dodge 5.9L Cummins
MDA30	Universal 4" Muffler Delete Pipe, Aluminized, 30"
MDA531	Universal 5" Muffler Delete Pipe, Aluminized, 31"
MDDS927	Universal 4" Dual Muffler Delete Pipe, Aluminized, 27"
MDAL017	Dodge 5.9L Muffler Delete Pipe, Aluminized, 17"
MDS017	Dodge 5.9L Muffler Delete Pipe, 304 Stainless, 17"
MDS9017	Dodge 5.9L Muffler Delete Pipe, 409 Stainless, 17"
MDS936	Dodge 5.9L Muffler Delete Pipe, 304 Stainless, 36"
MDS96108	04-5-07 Dodge Muffler Delete Assembly, 409 Stainless
MK96116	High-Flow Muffler Assembly, 04-5-05 Dodge 5.9L, 409 Stainless
UA2001	Universal 4" to 5" Adapter, Aluminized



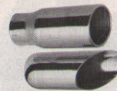
Replacement Muffler Kit



Part No.	Description
16998	04-5-07 Dodge 5.9L Cummins



Exhaust Tips



Part No.	Description
4990002	Polished Stainless Steel Tip w/Rolled Edge



Exhaust Tips



Part No.	Description
180295	Rolled Stainless Steel Tip, 5"
180450	Stainless Steel Tip, 4"-5"



Stainless Steel Exhaust Tips

Part No.	Description
T5049	Dual Wall Straight Tip, 4"-5"
T5050	Rolled Straight Tip, 4"-5"
T5051	Angled Straight Tip, 4"-5"
T5052	Angled Single Wall Tip, 4"-5"
T5053	Dual Wall Angled Tip, 4"-5"
T5072	Dual Wall Angled Tip, 4"-6"
T5074	Dual Wall Angled Tip, 5"-6"
T5075	Angled Rolled End Tip, 5"-6"



Exhaust Manifolds



Part No.	Description
1045985	98-02 Dodge 5.9L Cummins 24-Valve
1045986	Gasket Set - 98-07 Dodge 5.9L Cummins



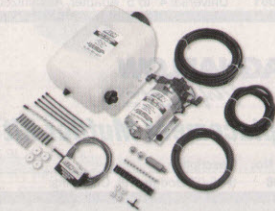
Boost Coolers™



Part No.	Description
49002	Stage 2 Boost Cooler - 91-09 Dodge Cummins
49003	Stage 3 Boost Cooler - 91-09 Dodge Cummins
40008	Boost Juice, Gallon (Sold in case of 4)
40014	2.5 Gallon Reservoir
40035	Low Fluid Level Indicator Switch
40060	Solenoid Upgrade Valve



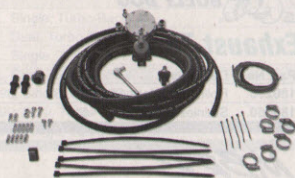
Water/Methanol Injection



Part No.	Description
303000	Water/Methanol Injection Kit, 1-Gallon Tank
303001	HD Water/Methanol Injection Kit, 5-Gallon Tank



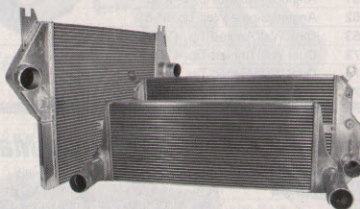
Propane Injection Kit



Part No.	Description
10800	Adjustable Propane Kit - 80 HP
20102	10 Gallon Propane Tank
20152	15 Gallon Propane Tank

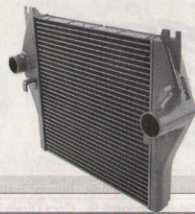


Intercoolers



Part No.	Description
1042520	94-02 Dodge 5.9L Cummins
1045210	Hose/Clamp Kit, 94-02 Dodge 5.9L Cummins

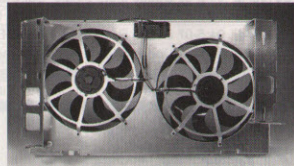
banks POWER Techni-Coolers



Part No.	Description
25980	03-05 Dodge 5.9L Cummins



Electric Fans



Part No.	Description
262	94-02 Dodge 5.9L Cummins
264	03-08 Dodge Cummins



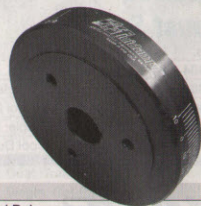
Head Stud Kits



Part No.	Description
2474202	98-07 Dodge 5.9L Cummins 24V
2474203	89-98 Dodge 5.9L Cummins 12V



Engine Balancers



Part No.	Description
920301	03-07 Dodge Cummins 5.9L, Internal Balance
960301	98-02 Dodge Cummins 5.9L 24V, Internal Balance
960311	92-98 Dodge Cummins 5.9L 12V, Internal Balance



Performance Oil Filter



Part No.	Description
HP4003	89-09 Dodge 5.9/6.7L Cummins



Speedometer Adjustment Tool



Part No.	Description
40550	Speedometer Adjustment Tool

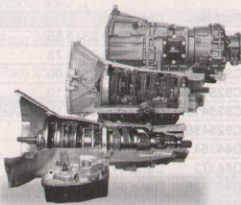
Superchips Tirepaq



Part No.	Description
3836	Tirepaq, 98-08 Dodge Diesel



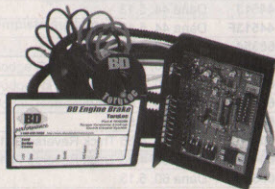
Transmission Package



Part No.	Description
1064164KF	96-98 Dodge 12V 47RE 4WD



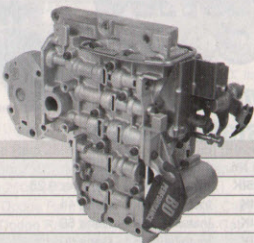
Transmission Controls



Part No.	Description
1030377	PressureLoc, 94-04 Dodge 47RH/47RE/48RE
1030395	TorqLoc Torque Converter Lock-Up



Valve Bodies



Part No.	Description
1030415	94-95 Dodge 47RH
1030416	96-98 Dodge 12V 47RE
1030417	98-99 Dodge 24V 47RE
1030418	00-02 Dodge 47RE
1030419	03-04 Dodge 48RE

DODGE DRIVETRAIN



Transmission Pan



Part No.	Description
1061500	89-07 727/518/47RH/47RE/48RE



Deep Transmission Pans



Part No.	Description
128001	Chrysler Torqueflite 727/46RH-48RE
128005	Chrysler Torqueflite 727/46RH-48RE, standard
128015	Chrysler Torqueflite 727/46RH-48RE, extra deep



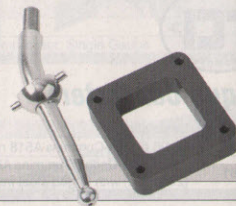
Rapid Power Automatic Transmission Fluid



Part No.	Description
105100	Automatic Transmission Fluid, Gallon



Short Shifters



Part No.	Description
1031050	99-02 Dodge 6-Speed NV 5600
1031055	03-05 Dodge 6-Speed NV 5600



Steering Box Stabilizers



Part No.	Description
1032004	94-02 Dodge 5.9L 4WD
1032005	03-08 Dodge 5.9L 4WD



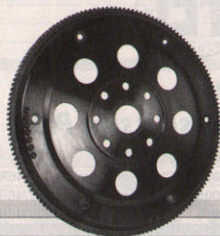
ZVT Clutches



Part No.	Description
1191	94-04 Dodge 5.9L Cummins 5 Speed, Stage I
1192	94-04 Dodge 5.9L Cummins 5 Speed, Stage II
20231	01-05 Dodge 5.9L Cummins 6 Speed NV 5600, Stage I
20232	01-05 Dodge 5.9L Cummins 6 Speed NV 5600, Stage II



Flexplate



Part No.	Description
1041210	94-07 Dodge 5.9L, SFI 29.3



Torque Converters



Part No.	Description
1070215X	94-02 Dodge 47RH/RE up to 450hp
1070217LX	03-07 Dodge 47RE 450+ hp
1070217X	03-07 Dodge 47RE up to 450hp



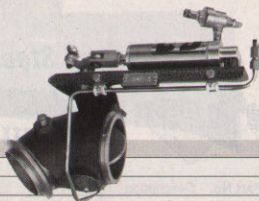
Torque Converters



Part No.	Description
142250	88-95 Dodge Cummins A518 non lock-up (23 spline)
142261	1995-2004 Dodge Cummins A618-48RE lock-up (23 spline) with forged steel front cover



Exhaust Brakes



Part No.	Description
2033137	99-02 Turbo Mount Vac Dodge
2023138	03-04 Turbo Mount Air Dodge
2023139	04.5-05 Turbo Mount Air Dodge
2023330	06-07 5.9L Turbo Mount Air Dodge



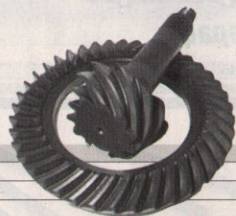
LTS Brake Pads



Part No.	Description
HB298Y787	94-99 Dodge 5.9L 4WD
HB487Y733	00-02 Dodge 5.9L



Ring & Pinions



Part No.	Description
C925355	Chrysler 9.25, 3.55
C925373F	Chrysler 9.25, 3.73
C925390	Chrysler 9.25, 3.90
C925410	Chrysler 9.25, 4.10
C925410F	Chrysler 9.25, 4.10, Reverse
C925456	Chrysler 9.25, 4.56
D44354	Dana 44, 3.54
D44373	Dana 44, 3.73
D44373F	Dana 44, 3.73 Reverse
D44392	Dana 44, 3.92
D44409	Dana 44, 4.09
D44409F	Dana 44, 4.09 Reverse
D44456	Dana 44, 4.56
D44456F	Dana 44, 4.56 Reverse
D44489F	Dana 44, 4.89 Reverse
D44513	Dana 44, 5.13
D44513F	Dana 44, 5.13 Reverse
D60354	Dana 60, 3.54
D60373	Dana 60, 3.73
D60410	Dana 60, 4.10
D60410F	Dana 60, 4.10 Reverse
D60456	Dana 60, 4.56
D60456XF	Dana 60, 4.56 Thick Reverse (4.10 & lower case)
D60488XF	Dana 60, 4.88 Thick Reverse (4.10 & lower case)
D60513	Dana 60, 5.13
D60513XF	Dana 60, 5.13 Thick Reverse (4.10 & lower case)
D80463	Dana 80, 4.63
D80488	Dana 80, 4.88



Ring & Pinion Installation Kits



Part No.	Description
C925IK	Installation Kit - Chrysler 9.25
D44IK	Installation Kit - Dana 44
D60IK	Installation Kit - Dana 60
D80IK	Installation Kit - Dana 80



6" Suspension Systems

Fits a 37 x 12.50" tire.



Part No.	Description
K823	06-08 Dodge Ram 2500/3500 Diesel 4WD, 6" (w/ Superide Shocks)
K823B	06-08 Dodge Ram 2500/3500 Diesel 4WD, 6" (w/ Bilstein Shocks)



6" Suspension Systems

Fits a 37" x 13.50" tire.



Part No.	Description
P2066B	6" System: 03-05 Dodge Ram 2500/3500, 5.9L
P2069B	6" System: 06-08 Dodge Ram 2500/3500, 6.7L
P2074B	6" Long Arm System: 07-08 Dodge Ram 2500/3500 (w/ ES9000 Shocks)
P2074BFR	6" Long Arm System: 07-08 Dodge Ram 2500/3500 (w/ Fox Reservoir Shocks)



5" Suspension System

Fits a 37" x 12.50" tire.



Must purchase all components for a complete system.

Part No.	Description
D45	5" Front Coil Springs: 03-08 Dodge Ram 2500/3500
D4513	5" Component Box 1: 03-08 Dodge Ram 2500/3500
D45523	5" Component Box 2: 03-08 Dodge Ram 2500/3500
H7094	Front Hydro Shock (need 2)
H7036	Rear Hydro Shock (need 2)



4" Suspension System

Fits a 37" x 12.50" tire.



Must purchase all components for a complete system.

Part No.	Description
RS6579B	Primary System: 03-08 Dodge Ram 2500/3500 (incl. Mega Cab) (Black)
RS80121B	Coil Springs: 03-08 Dodge Ram 2500/3500 (incl. Mega Cab) (Black)
RS747	U-Bolt Kit: 03-08 Dodge Ram 2500/3500 (incl. Mega Cab) (Black)
RS5317	Front Shock (Need 2): 03-08 Dodge Ram 2500/3500 (incl. Mega Cab)
RS5056	Rear Shock (Need 2): 03-08 Dodge Ram 2500/3500 (incl. Mega Cab)

DODGE SUSPENSION



Comfort Ride Leveling Kits

Fits a 35" tire (4WD) or 32" tire (2WD).



Part No.	Description
KC09100BK	94-08 Dodge Ram 2500 (2WD), 2.5" Front
KC09101BK	06-08 Dodge Ram Mega Cab 94-08 Ram 2500 4WD, 2" Front



Suspension Leveling System

Fits a 35" x 12.50" tire.



Part No.	Description
661090	94-08 Dodge Ram 2500/3500 (8-Lug)



LoadLIFTER 5000

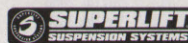
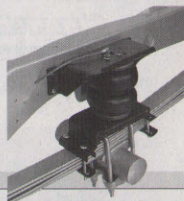


Part No.	Description
57295	03-08 Dodge Ram 2500/3500 4WD
25812	Load Controller II: Dual Path Compressor System

Firestone



Part No.	Description
2299	03-08 Dodge Ram 2500/3500
2158	Level Command II: Standard Compressor, Single Gauge



Superide® Shocks

Part No.	Description
85000 Series	Superide® Shocks



Hydro Shocks

Part No.	Description
H7000 Series	Hydro Shocks



Economy & Power Have Never Been Easier

Mileage XS Vehicle Economy Programmer

SAVE
\$\$\$



Save at the Pump and More

- Up to 20% MPG gains depending on vehicle, engine and driving conditions
- Calibrations engineered for improved fuel economy
- Retrieves, displays and clears Diagnostic Trouble Codes (DTC's) via the Diagnostic Library
- Coverage for many late model gasoline and diesel engines for pickups and SUVs
- Internet updateable through supplied USB cable
- Upgradeable to a full featured Flashpaq performance programmer

Mileage XS Part Numbers

Part No. 1851 Ford
Part No. 2851 GM
Part No. 3851 Dodge



ALL
NEW



Why Flashpaq Outsell the Rest

- Multiple performance enhancing calibrations including economy
- Adjustable vehicle speed limiter and engine rev limiter
- Compatible with Superchips Data Acquisition software package
- New model year support downloadable via Superchips.com
- Internet updateable through supplied USB cable
- Greater increases in torque, power and drivability
- Improved shift points and firmness
- Electronically adjusts shift patterns to improve drivability and corrects the vehicle's speedometer to compensate for non-stock tires, wheels and rear-end gear swaps
- Broad model year coverage included
- Retrieves, displays and clears DTC's via the Diagnostic Library.

Flashpaq Part Numbers

Part No. 1855 Ford diesel
Part No. 2855 GM diesel
Part No. 3855 Dodge diesel



Superchips



PERFORMANCE FILTERS

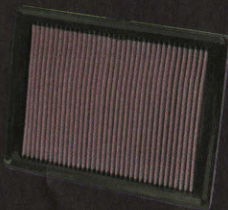
GUARANTEED HORSEPOWER!

MEASURED, VERIFIED & 100% GUARANTEED

K&N HIGH-FLOW INTAKE SYSTEMS

- Guaranteed Horsepower
- Improved Throttle Response
- Increase Filtering Capacity
- Lifetime High-Flow Air Filter
- Won't Void Factory Warranty
- Uses Factory Holes And Mounting Points
- K&N Million Mile Warranty

21 Up to
MORE
Horsepower



K&N HIGH-FLOW AIR FILTERS

- Increase Horsepower
- Never Needs Replacement
- Complies With Factory Warranties
- Available For Most Cars & Trucks
- K&N Million Mile Limited Warranty®



FORD MODULES



BULLY DOG

WatchDog

Part No.	Application
40400	WatchDog Monitor - White
40402	WatchDog Monitor - Black



BULLY DOG

Triple Dog GT

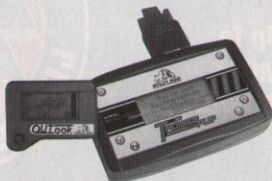
Part No.	Application
40420	Triple Dog GT for Diesel Vehicles



BULLY DOG

Triple Dog Power Pup

Part No.	Application
40502	Triple Dog Power Pup for Diesel Vehicles
41500	Triple Dog Diesel w/Outlook Monitor, 03-07 Ford 6.0L



BULLY DOG

Triple Dog E3

Part No.	Application
40505	Triple Dog E3 for Diesel Vehicles



BULLY DOG

Power Pup Downloader

Part No.	Application
41562	03-07 Ford 6.0L/08 6.4L
41566	w/Outlook Monitor, 03-07 Ford 6.0L



BULLY DOG

Performance Chips

Part No.	Application
41611	Auto 6 Position 4-Bank Chip, F250 & F350 95-97
41615	Auto 6 Position 4-Bank Chip F250 & F350 99.5-01
41617	Auto 6 Position 4-Bank Chip F250 & F350 02-03



Six-Gun Diesel Tuners



Part No.	Description
61023	Six-Gun Diesel Tuner, with selector, 03-07 Ford 6.0L
61051	Six-Gun Diesel tuner with PowerPDA docking station, 03-04 6.0L
61056	Six-Gun diesel tuner with PowerPDA docking station, 05-07 6.0L
61058	Power PDA Kit, 05-07 Ford 6.0L
62988	Speed Loader, 03-07 Ford 6.0L



Extreme Power Puck

Part No.	Description
P3000	94-03 Ford 7.3L Powerstroke
P3010	04-5-07 Ford 6.0L Powerstroke
P3020	08-09 Ford 6.4L Powerstroke



Predator Tuners

Part No.	Description
U7170	99-03 Ford 7.3L Powerstroke
U7165	03-07 Ford 6.0L Powerstroke
U7164	08-09 Ford 6.4L Powerstroke
U7777	PC Interface Kit - Serial
U7778	PC Interface Kit - USB



Juice Module w/Attitude Monitor

Part No.	Description
10100	99-03 Ford 7.3L Powerstroke
10102	03-07 Ford 6.0L Powerstroke - Platinum
10104	03-07 Ford 6.0L Powerstroke
10103	08-09 Ford 6.4L Powerstroke



EZ Module

Part No.	Description
10200	94-03 Ford 7.3L Powerstroke





Mileage Max

Part No.	Description
10401	03-07 Ford 6.0L Powerstroke



Evolution Programmers

Part No.	Description
15001	99-03 Ford 7.3L Powerstroke
15002	03-04 Ford 6.0L Powerstroke
15003	05-07 Ford 6.0L Powerstroke
15004	08-09 Ford 6.4L Powerstroke



Attitude Monitor and Mounts

Part No.	Description
13002	03-07 Ford 6.0L Powerstroke
13000	99-03 Ford 7.3L Powerstroke
18300	Dash Mount Pod - 99-04 Ford 7.3/6.0L
18301	Dash Mount Pod - 03-04 King Ranch/00-05 Excursion
18302	Dash Mount Pod - 05-07 Ford 6.0L
18400	Pillar Pod - 99-02 Ford 7.3L
18401	Pillar Pod - 03/07 Ford 7.3/6.0L



Insight Monitor

Part No.	Description
83400	INSIGHT Universal Digital Gauge Display
98600	INSIGHT Thermocouple (EGT Probe)



Inline Power Tuning Module

Part No.	Description
41042	03-04 Ford 6.0L Powerstroke



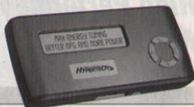
Max Energy Modules

Part No.	Description
42001	99-03 Ford 7.3L Powerstroke
42002	03-05 Ford 6.0L Powerstroke
42005	06-07 Ford 6.0L/08-09 6.4L Powerstroke



Max Energy E-CON Modules

Part No.	Description
43001	99-03 Ford 7.3L Powerstroke
43002	03-05 Ford 6.0L Powerstroke
43005	06-07 Ford 6.0L/08-09 6.4L Powerstroke



The World Leader in High-Performance Engine Tuning For Computer-Controlled Vehicles

HyperPAC

Part No.	Description
84004	99-03 Ford 7.3L Powerstroke
84005	03-06 Ford 6.0L Powerstroke



Performance Modules

Part No.	Description
3022	2003 Ford 6.0L Powerstroke, Adjustable
3023	04-05 Ford 6.0L Powerstroke, Adjustable



Mileage XS

Part No.	Description
1506	03-07 Ford 6.0L Powerstroke



Flashpaq

Part No.	Description
1805	99-03 Ford 7.3L/03-07 6.0L Powerstroke
1808	08-09 Ford 6.4L Powerstroke



Cortex Programmers

Part No.	Description
1950	99-08 Ford 7.3/6.0/6.4L Powerstroke



Livewire Tuners

NEW!

Part No.	Description
9600	Livewire Handheld Flash Device - Ford 7.3/6.0L Diesel
9621	6.4L Diesel Livewire Handheld Flash Device
9623	6.4L Extreme Livewire Package



SF3 Power Flash Tuners

NEW!

Part No.	Description
3015	SF3 Power Flash Device - Ford 7.3/6.0L Diesel
3021	6.4L Diesel SF3 Power Flash Device
3023	6.4L Extreme SF3 Package





Pro Dry S Intake Systems

Part No. Description

5110061	99-5-01 Powerstroke 7.3L, Type EZ, Stage 1
5110192	99-03 Powerstroke 7.3L, Type Cx, Stage 2
5110391	03-06 Powerstroke 6.0L, Type Cx, Stage 1
5111022	03-07 Powerstroke 6.0L, Type XP, Stage 2
5130392	03-07 Powerstroke 6.0L, Type Cx, Stage 2
5180392	03-07 Powerstroke 6.0L, Type Si, Stage 2



Pro 5 R Intake Systems

Part No. Description

5410061	99-5-01 Powerstroke 7.3L, Type EZ, Stage 1
5410191	02-03 Powerstroke 7.3L, Type EZ, Stage 1
5410192	99-03 Powerstroke 7.3L, Type Cx, Stage 2
5410199	Torque Booster Tube, 99-5-03 Powerstroke 7.3L
5411022	03-07 Powerstroke 6.0L, Type XP, Stage 2
5411262	08-09 Powerstroke 6.4L, Type XP, Stage 2
5430392	03-07 Powerstroke 6.0L, Type Cx, Stage 2
5480392	03-07 Powerstroke 6.0L, Type Si, Stage 2



Pro Guard 7 Intake Systems

Part No. Description

7510192	99-03 Powerstroke 7.3L, Type Cx, Stage 2
7511262	08-09 Powerstroke 6.4L, Type XP, Stage 2



Brute Force Induction Systems

Part No. Description

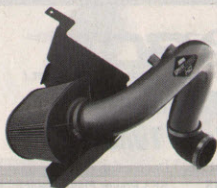
218114DC	99-03 Powerstroke 7.3L, Silver
218114DP	99-03 Powerstroke 7.3L, Polished
218104DC	03-06 Powerstroke 6.0L, Silver
218104DP	03-06 Powerstroke 6.0L, Polished



Brute Force HD Induction Systems

Part No. Description

219113DC	04-06 Powerstroke 6.0L, Silver
219113DP	04-06 Powerstroke 6.0L, Polished



The Performance Intake Company

Intake Systems

Part No. Description

400122	00-03 Powerstroke 7.3L, Quick-Fit
4001311	03-07 Powerstroke 6.0L, MXP
400222	99-03 Powerstroke 7.3L, Cold Air Dam

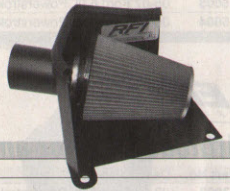


BULLY DOG

RFI Cold Air Intakes

Part No. Description

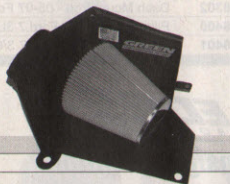
51100	03-04/06-07 Powerstroke 6.0L
51101	2005 Powerstroke 6.0L



Cold Air Intake Kits

Part No. Description

2564	94-97 Powerstroke 7.3L
2550	99-05-03 Powerstroke 7.3L
2551	03-04/06-07 Powerstroke 6.0L
2563	2005 Powerstroke 6.0L
2578	2008 Powerstroke 6.4L



Power-Flow Air Intake Systems

Part No. Description

PF9050P	03-07 Powerstroke 6.0L, Polished
PF9050WB	03-07 Powerstroke 6.0L, Back Wrinkle



High Performance Intake Systems

Part No. Description

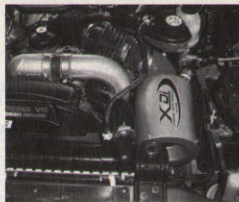
572530	99-03 Powerstroke 7.3L
572531	94-97 Powerstroke 7.3L
5725461	03-07 Powerstroke 6.0L
632576	2008 Powerstroke 6.4L





XDI Air Intakes

Part No.	Description
20707	03-07 Powerstroke 6.0L
20710	2008 Powerstroke 6.4L



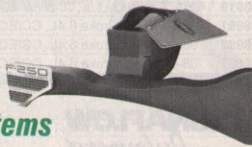
Sealed Air Intake System

Part No.	Description
20503	99-03 Powerstroke 7.3L



Powercore Intake Systems

Part No.	Description
198646	2008 Powerstroke 6.4L



Cold Air Intake Kits

Part No.	Description
19873	99-03 Powerstroke 7.3L
19860	03-07 Powerstroke 6.0L
19864	2008 Powerstroke 6.4L



OE Replacement Air Filters

Part No.	Description
1010100	03-07 Powerstroke 6.0L
1010107	08-09 Powerstroke 6.4L
3010005	1999 Powerstroke 7.3L



Pro-Guard 7 Replacement Air Filters

Part No.	Description
7310006	99.5-03 Powerstroke 7.3L



High Performance Air Filters

Part No.	Description
332248	99-03 Powerstroke 7.3L
E0780	03-07 Powerstroke 6.0L



FORD AIR/FUEL



Replacement Air Filters

Part No.	Description
20202	01-03 Powerstroke 7.3L
20203	03-07 Powerstroke 6.0L



Air Filter Recharge Kits

Part No.	Description
9050000	Aerosol Restore Kit, Gold
9050001	Aerosol Restore Kit, Blue



The Performance Intake Company

PowerAid Throttle Body Spacers

Part No.	Description
400601	03-04 Powerstroke 6.0L
400602	05-07 Powerstroke 6.0L



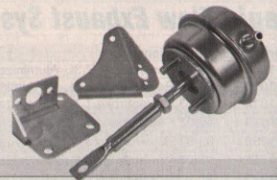
BladeRunner™ Charge Air Manifold

Part No.	Description
4610031	03-04 Powerstroke 6.0L



Wastegate

Part No.	Description
1047170	99.5-03 Powerstroke 7.3L



Big Head Wastegate Actuators

Part No.	Description
24401	99.5-03 Powerstroke 7.3L



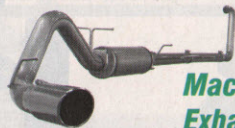
FORD EXHAUST



Large Bore HD Exhaust Systems

Part No. Description

4913002	99-03 Powerstroke 7.3L, Turbo-Back
4913003	03-07 Powerstroke 6.0L, Cat-Back
4913004	03-07 Powerstroke 6.0L, Turbo-Back
4913005	03-07 Powerstroke 6.0L, Turbo-Back w/Cat
4913006	08-09 Powerstroke 6.4L, DPF-Back



Mach Force XP Exhaust Systems

Part No. Description

4943003	03-07 Powerstroke 6.0L, Cat-Back
4943004	03-07 Powerstroke 6.0L, Turbo-Back
4943005	03-07 Powerstroke 6.0L, Turbo-Back w/Cat
4943006	08-09 Powerstroke 6.4L, DPF-Back



Stainless Exhaust Systems



Part No. Description

FS101	99-02 Powerstroke 7.3L, Turbo-Back, Single, T304 Stainless
FS101409	99-02 Powerstroke 7.3L, Turbo-Back, Single, T409 Stainless
FS103	03-07 Powerstroke 6.0L, Cat-Back, Single, T304 Stainless
FS103409	03-07 Powerstroke 6.0L, Cat-Back, Single, T409 Stainless
FS106	03-07 Powerstroke 6.0L, Cat-Back, Dual, T304 Stainless
FS104	03-07 Powerstroke 6.0L, Turbo-Back, Single, T304 Stainless
FS104409	03-07 Powerstroke 6.0L, Turbo-Back, Single, T409 Stainless
FS105	03-07 Powerstroke 6.0L, Turbo-Back, Dual, T304 Stainless
FS105409	03-07 Powerstroke 6.0L, Turbo-Back, Dual, T409 Stainless
FS106	03-07 Powerstroke 6.0L, Cat-Back, Dual, T304 Stainless



BULLY DOG

Rapid Flow Exhaust Systems



Part No. Description

181044	94-98 Powerstroke 7.3L, Aluminized, Single Cat-back, 4" w/Down Pipe
181014	94-98 Powerstroke 7.3L, 3" Aluminized Down Pipe
181010	99-03 Powerstroke 7.3L, Aluminized, Single Cat-Back, 4"
181020	99-03 Powerstroke 7.3L, Aluminized, Single Cat-Back, 5"
181050	03-07 Powerstroke 6.0L, Aluminized, Single Cat-Back, 4"
181052	03-07 Powerstroke 6.0L, Aluminized, Single Cat-Back, 5"
181223	03-07 Powerstroke 6.0L, Aluminized, Dual Turbo-Back, 4"
181446	03-07 Powerstroke 6.0L, T409 Stainless, Single Turbo-Back, 4"



Replacement Muffler Kit



Part No. Description

16997	03-07 Powerstroke 6.0L
-------	------------------------



Performance Polished SS Exhaust Systems



Part No. Description

15900	99-03 Powerstroke 7.3L, CC/EC-SB-LB, Downpipe-Back, Single, 4"
15905	99-03 Powerstroke 7.3L, CC/EC-SB-LB, Turbo-Back, Single, 4" w/DP
15915	99-03 Powerstroke 7.3L, CC-SB/LB, EC-LB, Turbo-Back Tuner, Single, 4"
15965	99-03 Powerstroke 7.3L, CC-SB/LB, EC-LB, Turbo-Back, Dual, 4"
16906	99-03 Powerstroke 7.3L, CC/EC-SB/LB, Turbo-Back, Single, 5"
16950	99-03 Powerstroke 7.3L, CC-SB/LB, Cat-Back, Single, 4"
16966	99-03 Powerstroke 7.3L, CC-SB/LB, Cat-Back, Dual, 4"
15950	03-07 Powerstroke 7.0L, CC-SB/LB, EC-LB, Turbo-Back, Dual, 4"
15952	03-07 Powerstroke 6.0L, CC-SB/LB, EC-LB, Turbo-Back, Single, 4"
16926	03-07 Powerstroke 6.0L, CC-SB/LB, EC-LB, Turbo-Back, Single, 5"
15967	03-04 Powerstroke 6.0L, CC-SB/LB, EC-LB, Harley-Davidson, Turbo-Back, Dual 4"
15971	03-04 Powerstroke 6.0L, CC-SB/LB, EC-LB, Harley-Davidson, Turbo-Back, Single 4"
16918	03-04 Powerstroke 6.0L, CC-SB/LB, EC-LB, Harley-Davidson, Turbo-Back, Single, 4"
16948	03-04 Powerstroke 6.0L, CC-SB/LB, EC-LB, Harley-Davidson, Cat-Back, Single 5"
16919	05-07 Powerstroke 6.0L, CC-SB/LB, EC-LB, Harley-Davidson, Turbo-Back, Single 4"
16981	08-09 Powerstroke 6.4L, CC/EC-SB-LB, DPF-Back, Single, 4"
16982	08-09 Powerstroke 6.4L, CC/EC-SB-LB, DPF-Back, Single, 5"
16987	08-09 Powerstroke 6.4L, CC/EC-SB-LB, DPF-Back, Dual, 4"



XL Series SS Exhaust Systems w/ Tip



Part No. Description

15939	94-97 Powerstroke 7.3L, CC/EC-SB/LB, Downpipe-Back, Single, 4"
15928	99-03 Powerstroke 7.3L, CC-SB/LB, EC-LB, Turbo-Back Tuner, Single, 4"
16951	99-03 Powerstroke 7.3L, CC-SB/LB, Cat-Back, Single, 4"
16967	99-03 Powerstroke 7.3L, CC-SB/LB, Cat-Back, Dual, 4"
15945	99-03 Powerstroke 7.3L, CC/EC-LB, Turbo-Back Tuner, Single, 4" w/DP
15979	99-03 Powerstroke 7.3L, CC-SB/LB, Turbo-Back, Single, 4"
15980	99-03 Powerstroke 7.3L, CC-SB/LB, EC-LB, Turbo-Back, Dual, 4"
16907	99-03 Powerstroke 7.3L, CC/EC-SB/LB, Turbo-Back, Single, 5"
15956	03-07 Powerstroke 6.0L, CC-SB/LB, EC-LB, Turbo-Back, Single, 4"
16922	03-04 Powerstroke 6.0L, CC-SB/LB, EC-LB, Harley-Davidson, Turbo-Back, Single 4"
15978	03-04 Powerstroke 6.0L, CC-SB/LB, EC-LB, Harley-Davidson, Turbo-Back, Single 4"
16949	03-04 Powerstroke 6.0L, CC-SB/LB, EC-LB, Harley-Davidson, Cat-Back, Single 5"
16923	05-07 Powerstroke 6.0L, CC-SB/LB, EC-LB, Harley-Davidson, Turbo-Back, Dual 4"
16983	08-09 Powerstroke 6.4L, CC/EC-SB-LB, DPF-Back, Single, 4"
16989	08-09 Powerstroke 6.4L, CC/EC-SB-LB, DPF-Back, Dual, 4"



Pro Series SS Exhaust Systems No Tip



Part No. Description

17928	99-03 Powerstroke 7.3L, CC-SB/LB, EC-LB, Turbo-Back Tuner, Single, 4"
17979	99-03 Powerstroke 7.3L, CC-SB/LB, Turbo-Back, Single, 4"
17951	99-03 Powerstroke 7.3L, CC-SB/LB, Cat-Back, Single, 4"
17967	99-03 Powerstroke 7.3L, CC-SB/LB, Cat-Back, Dual, 4"
17927	03-07 Powerstroke 6.0L, CC-SB/LB, EC-LB, Turbo-Back, Single, 5"
17954	03-07 Powerstroke 7.0L, CC-SB/LB, EC-LB, Turbo-Back, Dual, 4"
17957	03-07 Powerstroke 6.0L, CC-SB/LB, EC-LB, Turbo-Back, Single, 4"
17922	03-04 Powerstroke 6.0L, CC-SB/LB, EC-LB, Harley-Davidson, Turbo-Back, Single, 4"
17949	03-04 Powerstroke 6.0L, CC-SB/LB, EC-LB, Harley-Davidson, Cat-Back, Single, 5"
17977	03-04 Powerstroke 6.0L, CC-SB/LB, EC-LB, Harley-Davidson, Turbo-Back, Dual 4"
17978	03-04 Powerstroke 6.0L, CC-SB/LB, EC-LB, Harley-Davidson, Turbo-Back, Single 4"
17923	05-07 Powerstroke 6.0L, CC-SB/LB, EC-LB, Harley-Davidson, Turbo-Back, Dual 4"
17983	08-09 Powerstroke 6.4L, CC/EC-SB-LB, DPF-Back, Single, 4"
17984	08-09 Powerstroke 6.4L, CC/EC-SB-LB, DPF-Back, Single, 5"
17988	08-09 Powerstroke 6.4L, CC/EC-SB-LB, DPF-Back, Dual, 4"



Installer Series Powerstroke Exhaust Systems

Part No.	Description
S6218AL	94-97 7.3L, Single, Turbo-Back, 4" - OFF-ROAD
S6200AL	99-03 7.3L, Single, Turbo-Back, 4"
S6202AL	99-03 7.3L, Cool Duals™, Turbo-Back, 4"
S6222AL	99-03 7.3L, Single, Turbo-Back, 5"
S6206AL	03-07 6.0L, Single, Turbo-Back, 4"
S6208AL	03-07 6.0L, Single, Cat-Back, 4"
S6210AL	03-07 6.0L, Cool Duals™, Turbo-Back, 4"
S6224AL	03-07 6.0L, Single, Turbo-Back, 5"
S6226AL	03-07 6.0L, Single, Cat-Back, 5"
S6234AL	03-07 6.0L, Single, Turbo-Back (stock cat), 5"
S6242AL	08-09 6.4L, Single, Filter-Back, 4"



Powerstroke XP Series Exhaust Systems

Part No.	Description
S6218409	94-97 7.3L, Single, Turbo-Back, 4" - OFF-ROAD
S6200409	99-03 7.3L, Single, Turbo-Back, 4"
S6202409	99-03 7.3L, Cool Duals™, Turbo-Back, 4"
S6206409	03-07 6.0L, Single, Turbo-Back, 4"
S6208409	03-07 6.0L, Single, Cat-Back, 4"
S6210409	03-07 6.0L, Cool Duals™, Turbo-Back, 4"
S6212409	03-07 6.0L, Single, Turbo-Back, 4" - OFF ROAD
S6214409	03-07 6.0L, Cool Duals™, Turbo-Back, 4" - OFF ROAD
S6242409	03-07 6.0L, Single, Turbo-Back, 5"
S6244409	08-09 6.4L, Dual, Filter-Back, 4"



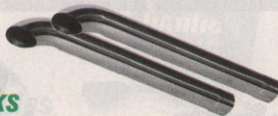
Pro Series Powerstroke Exhaust Systems

Part No.	Description
S6200304	99-03 Powerstroke 7.3L, Single, Turbo-Back, 4"
S6206304	03-07 Powerstroke 6.0L, Single, Turbo-Back, 4"
S6210304	03-07 Powerstroke 6.0L, Cool Duals™, Turbo-Back, 4"
S6242304	08-09 Powerstroke 6.4L, Single, Filter-Back, 4"
S6244304	08-09 Powerstroke 6.4L, Dual, Filter-Back, 4"



Smokers Truck Stacks

Part No.	Description
B1410	Smokers Stack - 4" Angle Cut, 36" Length, T304 Stainless, 1 pc.
B1430	Smokers Stack - 4" Turn Out, 36" Length, T304 Stainless, 1 pc.
B1440	Smokers Stack - 4" Turn Out, 48" Length, T304 Stainless, 1 pc.
B1510	Smokers Stack - 5" Straight Cut, 36" Length, T304 Stainless, 1 pc.
B1530	Smokers Stack - 5" Angle Cut, 36" Length, T304 Stainless, 1 pc.
B1540	Smokers Stack - 5" Angle Cut, 48" Length, T304 Stainless, 1 pc.
B1610	Smokers Stack - 6" Angle Cut, 36" Length, T304 Stainless, 1 pc.
S8200409	99-03 Powerstroke 7.3L, Dual Stack System, Turbo-Back
S8201409	03-07 Powerstroke 6.0L, Dual Stack System, Turbo-Back
S8202409	08-09 Powerstroke 6.4L, Dual Stack System, Filter-Back
S8204409	08-09 Powerstroke 6.4L, Single Stack System, Filter-Back
BB0003	Checker Plate to cover T-Pipe, 99-08 Super Duty
KT1003	Stainless Steel Mounting Kit w/Hardware, 99-08 Super Duty
UT1001	Universal "T" Pipe Kit, T409 Stainless

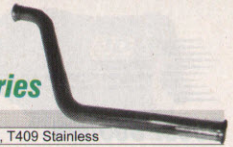


FORD EXHAUST



Exhaust Pipes & Accessories

Part No.	Description
DS6206	Down Pipe Kit, 03-07 Powerstroke 6.0L, T409 Stainless
FAL401	Down Pipe Kit, 99-03 Powerstroke 7.3L, Aluminized
FAL414	Catalytic Converter Test Pipe, 03-07 Powerstroke 6.0L, Aluminized
FS9414	Catalytic Converter Test Pipe, 03-07 Powerstroke 6.0L, T409 Stainless
FS9449	Adapter for Reg. Cab Applications - 03-07 Powerstroke 6.0L, T409 Stainless
MDA30	Universal 4" Muffler Delete Pipe, Aluminized, 30"
MDA531	Universal 5" Muffler Delete Pipe, Aluminized, 31"
MDDS927	Universal 4" Dual Muffler Delete Pipe, Aluminized, 27"
UA2001	Universal 4" to 5" Adapter, Aluminized



Exhaust Tips

Part No.	Description
4990002	Polished Stainless Steel Tip w/Rolled Edge



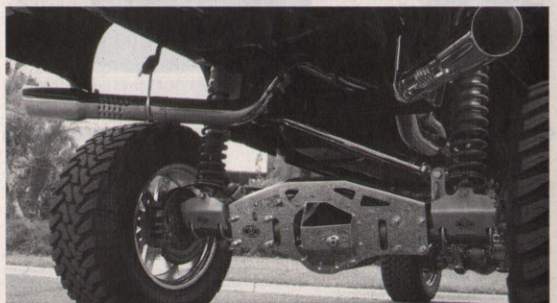
Exhaust Tips

Part No.	Description
180295	Rolled Stainless Steel Tip, 5"
180450	Stainless Steel Tip, 4"-5"



Stainless Steel Exhaust Tips

Part No.	Description
T5049	Dual Wall Straight Tip, 4"-5"
T5050	Rolled Straight Tip, 4"-5"
T5051	Angled Straight Tip, 4"-5"
T5052	Angled Single Wall Tip, 4"-5"
T5053	Dual Wall Angled Tip, 4"-5"
T5072	Dual Wall Angled Tip, 4"-6"
T5074	Dual Wall Angled Tip, 5"-6"
T5075	Angled Rolled End Tip, 5"-6"

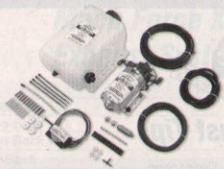


Ford Wheels & Tires on Page 7



Boost Coolers™

Part No.	Description
50002	Stage 2 Boost Cooler - 03-09 Powerstroke 6.0/6.4L
50003	Stage 3 Boost Cooler - 03-09 Powerstroke 6.0/6.4L
50012	Stage 2 Boost Cooler - 99-03 Powerstroke 7.3L
50013	Stage 3 Boost Cooler - 99-03 Powerstroke 7.3L
40008	Boost Juice, Gallon (Sold in case of 4)
40014	2.5 Gallon Reservoir
40035	Low Fluid Level Indicator Switch
40060	Solenoid Upgrade Valve



Water/Methanol Injection

Part No.	Description
30300	Water/Methanol Injection Kit, 1-Gallon Tank
303001	HD Water/Methanol Injection Kit, 5-Gallon Tank



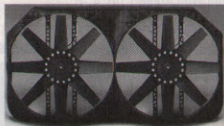
Propane Injection Kit

Part No.	Description
10800	Adjustable Propane Kit - 80 HP
20102	10 Gallon Propane Tank
20152	15 Gallon Propane Tank



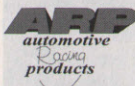
Techni-Coolers

Part No.	Description
25973	95.5-03 Powerstroke 7.3L
25974	03-04 Powerstroke 6.0L
25975	05-07 Powerstroke 6.0L



Electric Fans

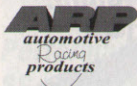
Part No.	Description
270	Big Truck Fan w/Ford Mounting Brackets
278	98-03 Powerstroke 7.3L



Head Stud Kits

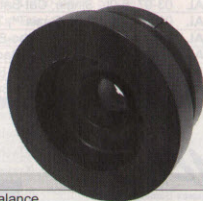


Part No.	Description
1504069	Ford 6.9L International
2504201	93-02 Powerstroke 7.3L
2504202	03-07 Powerstroke 6.0L



Main Studs

Part No.	Description
2505801	93-02 Powerstroke 7.3L



Engine Balancers

Part No.	Description
720211	99-03 Powerstroke 7.3L, External Balance
870201	03-07 Powerstroke 6.0L, External Balance



Performance Oil Filter

Part No.	Description
HP6001	94-03 Powerstroke 7.3L
HP7009	03-09 Powerstroke 6.0/6.4L



Outlook Monitor and Mounts

Part No.	Description
40166	Outlook Triple Dog Monitor
40173	Outlook Monitor - 99-03 Powerstroke 7.3L
31300	Outlook Pillar Mount - 99-02 Super Duty
31301	Outlook Pillar Mount - 03-07 Super Duty



X-Monitor and Accessories

Part No.	Description
1087001	X-Monitor, 03-07 Powerstroke 6.0L
1087200	X-Monitor 3-In-1 Kit, 99-02 Super Duty
1087210	X-Monitor 3-In-1 Kit, 03-07 Super Duty
1081130	Low Fuel Pressure LED Alarm Kit - Red
1081133	Low Fuel Pressure LED Alarm Kit - Amber
1081150	Cool Down Timer Kit
1081151	Thermocoupler Probe Kit, Cool Down Timer



BULLY DOG

Speedometer Adjustment Tool



Part No. Description
40550 Speedometer Adjustment Tool



Top Speed Eliminator



Part No. Description
1057660 Top Speed Eliminator - 03-07 Powerstroke 6.0L

Superchips Tirepaq



Part No. Description
1846 99-07 Powerstroke 7.3/6.0L



BULLY DOG

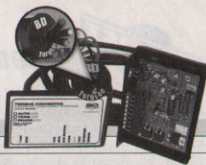
Transmission Kit



Part No. Description
151000 Shift Enhancer, 94-03 E4OD/4R100



Transmission Controls



Part No. Description
1030395 TorqLoc Torque Converter Lock-Up
1060380 PressureLoc - 95-03 Powerstroke 7.3L



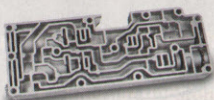
Transcommand Modules



Part No. Description
62560 93-98 Ford E4OD
62570 97-05 Ford 4R100



Accumulator Bodies



Part No. Description
1060442 89-03 Powerstroke 7.3L E4OD/4R100 2wd
1060444 89-03 Powerstroke 7.3L E4OD/4R100 4wd

FORD DRIVETRAIN



Transmission Pan



Part No. Description
1061710 89-07 Ford 7.3/6.0L, Deep Sump



Deep Transmission Pan



Part No. Description
498010 Ford E4OD/4R100, Holds 7 extra quarts



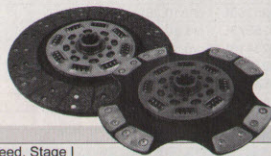
Automatic Transmission Fluid



Part No. Description
105100 Gallon



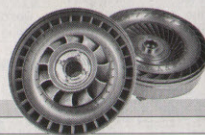
ZVT Clutches



Part No. Description
2411 98-03 Powerstroke 7.3L 6-speed, Stage I
2412 98-03 Powerstroke 7.3L 6-speed, Stage II
9441 94-97 Powerstroke 7.3L 5-speed, Stage I
9441SK 94-97 Powerstroke 7.3L 5-speed, Stage I w/solid flywheel & bolts



Torque Converters



Part No. Description
1030223 99-03 Ford 7.3L 4R100 6 stud
1030227 03-07 Ford 6.0L 5R110



Torque Converters



Part No. Description
443631 83-87 Ford C6 with 6.9L Diesel
492200 89-up Ford E4OD/4R100 RV/Towing, 4-lug forged steel front
492201 89-up Ford E4OD/4R100 RV/Towing, 6-lug forged steel front
492202 89-up Ford E4OD/4R100 RV/Towing, 6-lug billet steel front w/ triple-disc clutch & steel stator



Exhaust Brakes



Part No. Description
1027145 03-07 Powerstroke 6.0L Remote Mount Air Manual Trans
2023144 99-03 Powerstroke 7.3L Turbo Mount Air

FORD DRIVETRAIN



LTS Brake Pads

Part No.	Description
HB302Y700	99-04 Super Duty 7.3/6.0L, Front
HB303Y685	99-04 Super Duty 7.3/6.0L, Rear
HB528Y811	05-08 Super Duty 6.0/6.4L, Front
HB529Y710	05-07 Super Duty 6.0L non-dually, Rear



Ring & Pinions

Part No.	Description
D50456	Dana 50, 4.56
D50489	Dana 50, 4.89
D50513	Dana 50, 5.13
D50538	Dana 50, 5.38
D60354	Dana 60, 3.54
D60373	Dana 60, 3.73
D60410	Dana 60, 4.10
D60410F	Dana 60, 4.10 Reverse
D60456	Dana 60, 4.56
D60456XF	Dana 60, 4.56 Thick Reverse (4.10 & lower case)
D60488XF	Dana 60, 4.88 Thick Reverse (4.10 & lower case)
D60513	Dana 60, 5.13
D60513XF	Dana 60, 5.13 Thick Reverse (4.10 & lower case)
D60538	Dana 60, 5.38
D60538XF	Dana 60, 5.38 Thick Reverse (4.10 & lower case)
D80463	Dana 80, 4.63
D80488	Dana 80, 4.88
F1025355L	Ford 10.25" Late, 3.55
F1025373L	Ford 10.25" Late, 3.73
F1025410L	Ford 10.25" Late, 4.10
F1025456L	Ford 10.25" Late, 4.56
F105410PK	Ford 10.5", 4.10
F105456PK	Ford 10.5", 4.56
F105489PK	Ford 10.5", 4.89
F105513PK	Ford 10.5", 5.13



Ring & Pinion Installation Kits

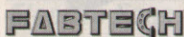
Part No.	Description
D601K	Installation Kit - Dana 60/61
D801K	Installation Kit - Dana 80
F1051K	Installation Kit - Ford 10.5"



6" Suspension Systems

- Fits a 37" x 12.50" Tire (99-04)
- Fits a 35" x 12.50" Tire (05-07)
- Fits a 37" x 13.50" Tire (08-09)

Part No.	Description
P4016B	6" Suspension Kit: 99-04 Ford Super Duty F-250/350 4WD, Diesel
P4037B	6" Stage 1 Suspension Kit: 05-07 Ford Super Duty F-250/350 4WD, Diesel
P4150B	6" Stage 1 Suspension Kit: 08-09 Ford Super Duty F-250/350 4WD, Diesel
P4152B	6" Stage 2 Suspension Kit: 08-09 Ford Super Duty F-250/350 4WD, Diesel



6" Radius Arm System w/ Performance Coil Springs & Dirt Logic Shocks

- Fits a 315/70R17 or 325/65R18 Tire

Must purchase all components for a complete system

Part No.	Description
FTS22024BK	6" Front Coil Box: 05-09 Ford F-250 Super Duty
FTS22077BK	6" Radius Arm Component Box: 08-09 Ford F-250/350 Super Duty
FTS22104	6" Rear Kit: 08-09 Ford F-250 Super Duty
FTS81038	2.25 Dirt Logic Shock (front - need 2)
FTS81005	2.25 Dirt Logic Shock (rear - need 2)



FORD SUSPENSION



4" Suspension Systems

- Fits a 35" x 12.50" Tire

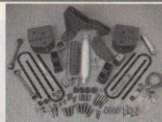
Part No.	Description
K632	99-04 Ford F-250/350 Super Duty 4WD, Diesel
K796	05-07 Ford F-250/350 Super Duty 4WD, Diesel
K854	08-09 Ford F-250/350 Super Duty 4WD, Diesel



4" Suspension Systems

- Fits a 35" x 12.50" Tire
- Must purchase all components for a complete system

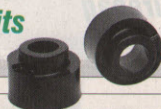
Part No.	Description
F545	4" Front Coil Springs: 08-09 Ford F-250/350 Super Duty 4WD, Diesel
F8451	4" Lift Component Box: 08-09 Ford F-250 Super Duty 4WD, Diesel
F8451H	4" Lift Component Box: 08-09 Ford F-350 Super Duty 4WD, Diesel
FA450	Pitman Arm: 08-Up Ford F-250/350 Super Duty 4WD, Diesel
H7092	Front Hydro Shock (need 2)
H7079	Rear Hydro Shock (need 2)



Comfort Ride Leveling Kits

- Fits a 33" x 12.50" Tire

Part No.	Description
KF09101BK	99-09 Ford Super Duty 2WD, 2" Front
KF09119BK	05-09 Ford Super Duty 4WD, 2.5" Front



Suspension Leveling System

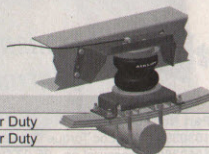
- Fits a 35" x 12.50" Tire

Part No.	Description
662095	05-09 Ford F-250/350 Super Duty 4WD

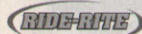


LoadLIFTER 5000

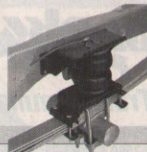
Part No.	Description
57212	Super Duty: 05-09 Ford F-250/350 Super Duty
57215	Super Duty: 69-04 Ford F-250/350 Super Duty
25430	Smart Air Leveling System - Dual



Firestone



Part No.	Description
2071	84-09 Ford F-250/350 Super Duty
2097	Level Command: HD Compressor, Single Gauge



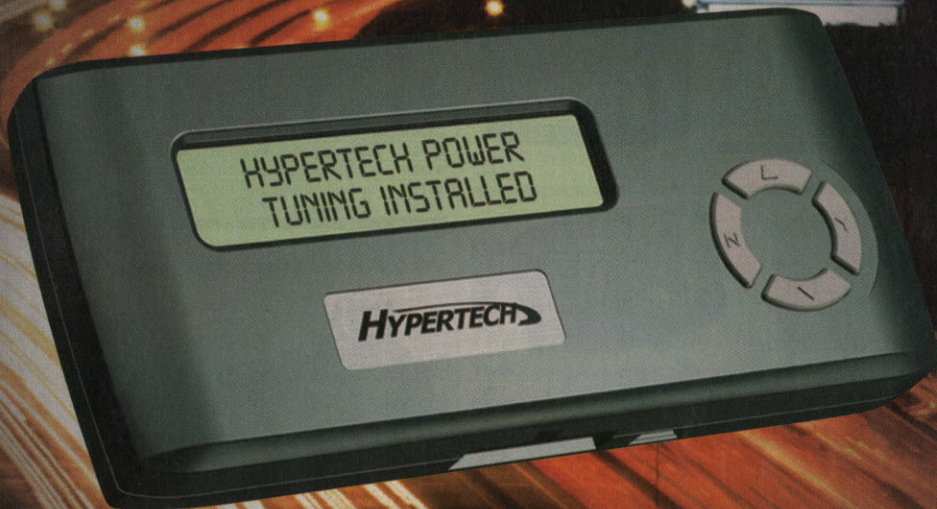
RS5000 Shocks

Part No.	Description
RS5000	RS5000 Shocks



Max Energy

POWER PROGRAMMER

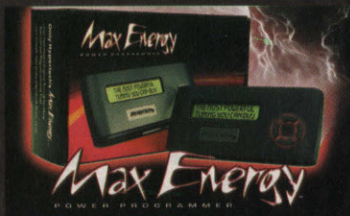


HYPERTECH

MAX ENERGY POWER PROGRAMMER IS ONLY FOR USE ON CONTROLLED VEHICLES

The Max Energy Power Programmer extracts every bit of energy possible out of every molecule of fuel giving you more mpg at part throttle and more power at wide open throttle. All this and more...Only from Hypertech!

- Maximum Horsepower & Torque
- Improved Fuel Economy
- Raise Top Speed Limiter
- Raise "RPM" Rev Limiter
- Adjust Shift Points & Firmness
- Recalibrate Speedometer
- Lower Cooling Fan On/Off Temps
- Read, Display and Clear DTCs
- Internet Updateable (USB included)
- 50-State Emissions Legal
- Easy Plug-And-Play Installation





BULLY DOG

WatchDog

Part No.	Application
40400	WatchDog Monitor - White
40402	WatchDog Monitor - Black



BULLY DOG

Triple Dog GT

Part No.	Application
40420	Triple Dog GT for Diesel Vehicles



BULLY DOG

Triple Dog Power Pup

Part No.	Application
40502	Triple Dog Power Pup for Diesel Vehicles
41500	Triple Dog Diesel w/Outlook Monitor
43500	Triple Dog w/Outlook Monitor - 01-05 Duramax



BULLY DOG

Triple Dog E3

Part No.	Application
40505	Triple Dog E3 for Diesel Vehicles



BULLY DOG

Rapid Power Module

Part No.	Application
43067	04.5-05 GM Duramax LLY



BULLY DOG

Power Pup Downloader

Part No.	Application
43569	01-08 GM Duramax 6.6L



Six-Gun Diesel Tuners



Part No.	Description
61026	Six-Gun Tuner w/Power PDA - 01-04 GM LB7
63767	Six-Gun Tuner w/Selector Switch - 01-04 GM LB7
61031	Six-Gun Tuner w/Power PDA - 04.5-05 GM LLY
63717	Six-Gun Tuner w/Selector Switch - 04.5-05 GM LLY
63872	Six-Gun Tuner w/Power PDA - 06-07 GM LBZ
63867	Six-Gun Tuner w/Selector Switch - 06-07 GM LBZ
63892	Six-Gun Tuner w/Power PDA - 07.5-08 GM LMM
63887	Six-Gun Tuner w/Selector Switch - 07.5-08 GM LMM
63718	Speed-Loader - 01-07 GM 6.6 LB7, LLY, LBZ
63838	Speed-Loader - 07.5-08 GM LMM



DIABLOSPORT
GASOLINE AND DIESEL TUNING SYSTEMS

Power Puck



Part No.	Description
P2000	01-04 GM 6.6L Duramax LB7
P2010	04.5-05 GM 6.6L Duramax LLY
P2020	06-07 GM 6.6L Duramax LBZ



DIABLOSPORT
GASOLINE AND DIESEL TUNING SYSTEMS

Predator Tuners



Part No.	Description
U7180	01-04 GM 6.6L Duramax LB7
U7185	04.5-05 GM 6.6L Duramax LLY
U7186	06-08 GM 6.6L Duramax LBZ/LMM
U7777	PC Interface Kit - Serial
U7778	PC Interface Kit - USB



Juice Modules with Attitude Monitor



Part No.	Description
20100	01-04 GM 6.6L Duramax LB7
20101	04.5-05 GM 6.6L Duramax LLY
20102	06-07 GM 6.6L Duramax LLY/LBZ
20103	07.5-08 GM 6.6L Duramax LMM



EZ Modules

Part No.	Description
20200	01-04 GM 6.6L Duramax LB7
20201	04.5-05 GM 6.6L Duramax LLY



Evolution Programmable

Part No.	Description
25002	06-07 GM 6.6L Duramax LLY/LBZ
25003	07.5-08 GM 6.6L Duramax LMM



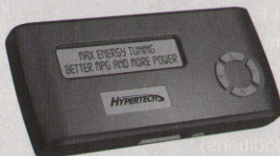
Insight Monitor

Part No.	Description
83400	INSIGHT Universal Digital Gauge Display
98600	INSIGHT Thermocouple (EGT Probe)



Max Energy Programmable

Part No.	Description
32001	01-05 GM Duramax 6.6L
32003	06-08 GM Duramax 6.6L



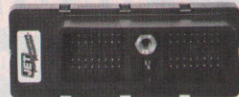
Max Energy E-CON Modules

Part No.	Description
33001	01-05 GM Duramax 6.6L
33003	06-08 GM Duramax 6.6L



HyperPAC

Part No.	Description
83004	01-05 GM Duramax 6.6L
83005	2006 GM Duramax 6.6L



Performance Module

Part No.	Description
15023	01-05 GM Duramax 6.6L LB7/LLY



Triple Play Module

Part No.	Description
1002	01-03 GM 6.6L Duramax - Adjustable



Part No.	Description
2506	01-07 GM 6.6L Duramax LB7, LLY, LBZ



Part No.	Description
2805	01-07 GM 6.6L Duramax LB7, LLY, LBZ



Part No.	Description
2950	01-08 GM Duramax 6.6L



SF3 Power Flash Tuners



NEW!

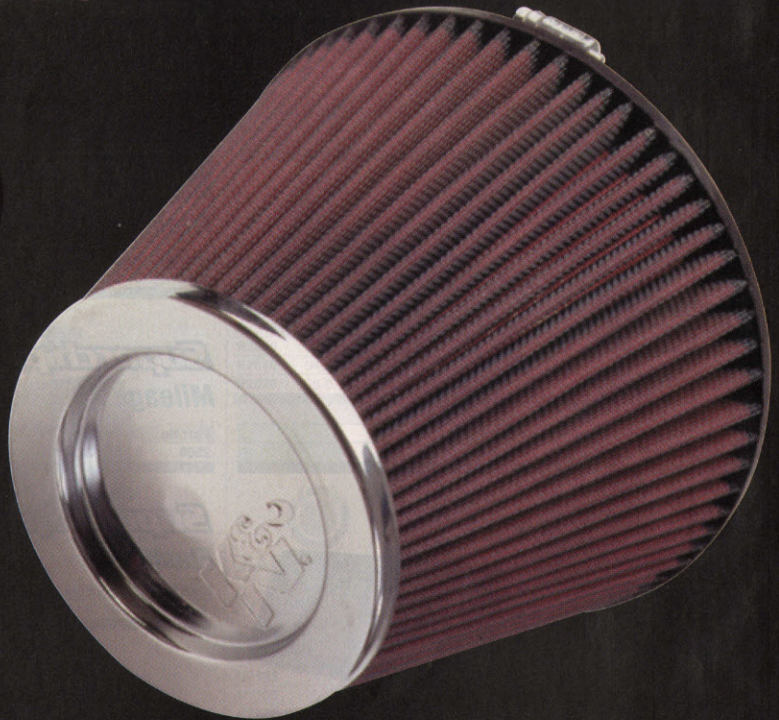


Part No.	Description
	SF3 Power Flash Tuner - 07-08 GM 6.6L Duramax



AIR FILTERS

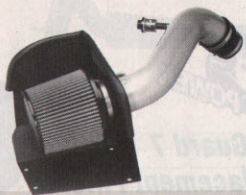
GUARANTEED HORSEPOWER WITH K&N AIR FILTERS



How do we increase horsepower so consistently? It all starts with The World's Best Air Filter. Even a K&N replacement air filter is limited by the size of the original air box but once we remove the air box we've got plenty of room to work with. Now we can apply our High-Flow Technology to a large conical open element air filter, providing more surface area for huge increases in airflow that turn into horsepower you can feel. The oversize air filter also captures and holds more dirt. This increases the service life before a cleaning is required (up to 100,000 miles for air intakes depending on driving conditions).



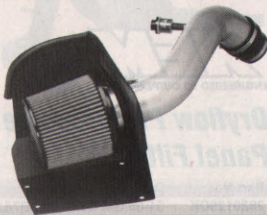
Pro Dry S Intake Systems



Part No.	Description
5110782	01-04 GM LB7, Type Cx, Stage 2
5110612	04.5-05 GM LLY, Type Cx, Stage 2
5110881	06-07 GM LLY/LBZ, Type Cx, Stage 1
5110882	06-07 GM LLY/LBZ, Type Cx, Stage 2
5111332	07.5-08 GM LMM, Type Cx, Stage 2



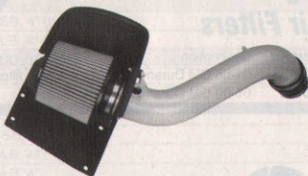
Pro 5 R Intake Systems



Part No.	Description
5410121	01-04 GM LB7, Type Cx, Stage 1
5410782	01-04 GM LB7, Type Cx, Stage 2
5410611	01-05 GM LB7/LLY, Type Cx, Stage 1
5410612	04.5-05 GM LLY, Type Cx, Stage 2
5410881	06-07 GM LLY/LBZ, Type Cx, Stage 1
5410882	06-07 GM LLY/LBZ, Type Cx, Stage 2
5411332	07.5-08 GM LMM, Type Cx, Stage 2



Pro Guard 7 Intake Systems



Part No.	Description
7510782	01-04 GM LB7, Type Cx, Stage 2
7580782	01-04 GM LB7, Type Si, Stage 2
7510612	04.5-05 GM LLY, Type Cx, Stage 2
7510881	06-07 GM LLY/LBZ, Type Cx, Stage 1
7510882	06-07 GM LLY/LBZ, Type Cx, Stage 2
7580882	06-07 GM LLY/LBZ, Type Si, Stage 2
7580883	06-07 GM LLY/LBZ, Type Si, Stage 2 SS
7511332	07.5-08 GM LMM, Type Cx, Stage 2
7581332	07.5-08 GM LMM, Type Si, Stage 2
7581333	07.5-08 GM LMM, Type Si, Stage 2 SS



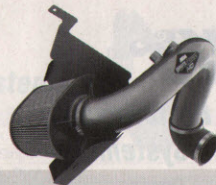
Brute Force Induction Systems



Part No.	Description
218013DC	01-04 GM 6.6L Duramax - Silver
218013DP	01-04 GM 6.6L Duramax - Polished
218017DC	04.5-05 GM 6.6L Duramax - Silver
218017DP	04.5-05 GM 6.6L Duramax - Polished



Brute Force HD Induction Systems



Part No.	Description
219021DC	01-04 GM 6.6L Duramax - Silver
219021DP	01-04 GM 6.6L Duramax - Polished
219022DC	04.5-05 GM 6.6L Duramax - Silver
219022DP	04.5-05 GM 6.6L Duramax - Polished
219024DC	06-07 GM 6.6L Duramax - Silver
219024DP	06-07 GM 6.6L Duramax - Polished
219025DC	07-08 GM 6.6L Duramax - Silver
219025DP	07-08 GM 6.6L Duramax - Polished



RFI Cold Air Intakes



Part No.	Description
53100	01-05 GM 6.6L Duramax
53101	06-07 GM 6.6L Duramax



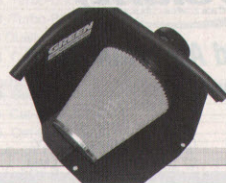
High-Ram Air Intake Kits



Part No.	Description
42132	01-04 GM Dura max LB7
42135	04.5-05 GM Duramax LLY
42142	06-07 GM Duramax LLY/LBZ
42172	07.5-08 GM Duramax LMM



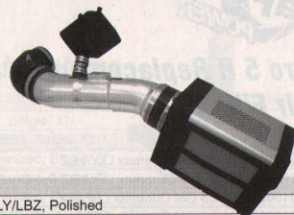
Cold Air Intake Kits



Part No.	Description
2556	01-05 GM Duramax LB7/LLY
2568	06-07 GM Duramax LBZ
2580	07.5-08 GM Duramax LMM



Power-Flow Air Intake Systems



Part No.	Description
PF7075P	05-07 GM Duramax LLY/LBZ, Polished
PF7075WB	05-07 GM Duramax LLY/LBZ, Black Wrinkle



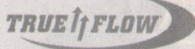
High Performance Intake Systems

Part No.	Description
573034	01-04 GM Duramax LB7
773034KP	01-04 GM Duramax LB7, Aluminum Tube
573047	04.5-05 GM Duramax LLY (Panel filter)
773047KP	04.5-05 GM Duramax LLY (Panel filter), Aluminum Tube
573057	05-07 GM Duramax LBZ (Round filter)
633066	07-09 GM Duramax LMM



XDI Air Intakes

Part No.	Description
10709	06-07 GM Duramax LLY/LBZ
10710	07.5-09 GM Duramax LMM



Sealed Air Intake System

Part No.	Description
10503	01-04 GM Duramax LB7
10506	04.5-05 GM Duramax LLY



Cold Air Intake Kits

Part No.	Description
15066	05-06 GM Duramax LBZ
15866	01-04 GM Duramax LB7
15966	04.5-05 GM Duramax LLY
15166	07.5-08 GM Duramax LMM



Pro 5 R Replacement Air Filters

Part No.	Description
1010101	2006 GM Duramax LLY/LBZ
1110101	2006 GM Duramax LLY/LBZ Pro Dry S
3010062	01-05 GM Duramax LB7/LLY
3080062	01-05 GM Duramax LB7/LLY, SS



Pro Guard 7 Replacement Filters

Part No.	Description
7110101	2006 GM Duramax LLY/LBZ



Dryflow Performance Panel Filters



Part No.	Description
2820129DK	01-05 GM Duramax LB7/LLY



High Performance Air Filters

Part No.	Description
332135	01-05 GM Duramax LB7/LLY (Panel filter)
E0781	05-09 GM Duramax (Round filter)



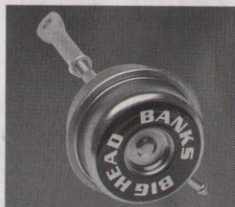
Air Filter Recharge Kits

Part No.	Description
9050000	Aerosol Restore Kit, Gold
9050001	Aerosol Restore Kit, Blue



Big Head Wastegate Actuators

Part No.	Description
24396	01-04 GM Duramax LB7





Large Bore HD Exhaust Systems



Part No.	Description
4914001	01-05 GM LB7/LLY, Cat-Back
4914002	06-07 GM LLY/LBZ, Cat-Back
4914004	07.5-08 GM LMM, DPF-Back



Mach Force XP Exhaust Systems



Part No.	Description
4944001	01-05 GM LB7/LLY, Cat-Back
4944002	06-07 GM LLY/LBZ, Cat-Back
4944004	07.5-08 GM LMM, DPF-Back



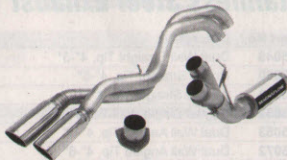
Monster Exhaust Systems



Part No.	Description
48629	01-04 GM LB7, EC/CC-SB, 4" (no cat.)
48630	01-04 GM LB7, EC/CC-LB, 4" (no cat.)
48633	02-05 GM LB7/LLY EC/CC-SB, 4"
48634	02-05 GM LB7/LLY EC/CC-LB, 4"
48937	06-07 GM LLY/LBZ RC-LB, 4"
48938	06-07 GM LLY/LBZ RC-SB, 4"
48939	06-07 GM LLY/LBZ CC-SB, 4"
48940	06-07 GM LLY/LBZ EC-LB, 4"
48941	06-07 GM LLY/LBZ CC-LB, 4"
47784	07.5-08 GM LMM, EC/SB-CC/LB, 4"



Performance Exhaust Systems



Part No.	Description
16930	01-05 GM 6.6L Duramax, CC-LB Dually, Cat-Back, Single, 4"
16932	01-05 GM 6.6L Duramax, CC-SB, Cat-Back, Single, 4"
16934	01-05 GM 6.6L Duramax, EC-LB, Cat-Back, Single, 4"
16900	01-07 GM 6.6L Duramax, CC-SB, Turbo-Back, Single, 4"
16901	01-07 GM 6.6L Duramax, CC-SB, Turbo-Back, Dual, 4"
16908	01-07 GM 6.6L Duramax, CC-SB, Turbo-Back, Single, 5"
16940	06-07 GM 6.6L Duramax, CC-LB Dually, Cat-Back, Single, 4"
16960	06-07 GM 6.6L Duramax, CC-SB, Cat-Back, Single, 5"
16962	06-07 GM 6.6L Duramax, CC-LB, Cat-Back, Single, 5"
16964	06-07 GM 6.6L Duramax, CC-SB, Cat-Back, Dual, 4"
16910	07.5-08 GM 6.6L Duramax, EC/CC-SB-LB, DPF-Back, Single, 4"
16912	07.5-08 GM 6.6L Duramax, EC/CC-SB-LB, DPF-Back, Single, 5"
16914	07.5-08 GM 6.6L Duramax, EC/CC-SB-LB, DPF-Back, Dual, 4"



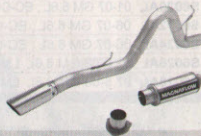
Stainless Exhaust Systems



Part No.	Description
CS101	01-05 GM LB7/LLY, Turbo-Back, Single, 4"
CS102	01-05 GM LB7/LLY, Cat-Back, Single, 4"
CS103	01-05 GM LB7/LLY, Turbo-Back, Dual, 4"
CS104	01-05 GM LB7/LLY, Cat-Back, Dual, 4"
CS105	06-07 GM LB7/LLY, Turbo-Back, Single, 4"
CS106	06-07 GM LB7/LLY, Cat-Back, Dual, 4"



XL Series Exhaust Systems



Part No.	Description
16931	01-05 GM 6.6L Duramax, CC-LB Dually, Cat-Back, Single, 4"
16933	01-05 GM 6.6L Duramax, CC-SB, Cat-Back, Single, 4"
16935	01-05 GM 6.6L Duramax, EC-LB, Cat-Back, Single, 4"
16902	01-07 GM 6.6L Duramax, CC-SB, Turbo-Back, Single, 4"
16903	01-07 GM 6.6L Duramax, CC-SB, Turbo-Back, Dual, 4"
16909	01-07 GM 6.6L Duramax, CC-SB, Turbo-Back, Single, 5"
16941	06-07 GM 6.6L Duramax, CC-LB Dually, Cat-Back, Single, 4"
16943	06-07 GM 6.6L Duramax, CC-SB, Cat-Back, Single, 4"
16961	06-07 GM 6.6L Duramax, CC-SB, Cat-Back, Single, 5"
16963	06-07 GM 6.6L Duramax, CC-LB, Cat-Back, Single, 5"
16911	07.5-08 GM 6.6L Duramax, EC/CC-SB-LB, DPF-Back, Single, 4"
16913	07.5-08 GM 6.6L Duramax, EC/CC-SB-LB, DPF-Back, Single, 5"
16915	07.5-08 GM 6.6L Duramax, EC/CC-SB-LB, DPF-Back, Dual, 4"



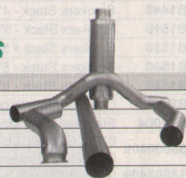
Pro Series Exhaust Systems



Part No.	Description
17931	01-05 GM 6.6L Duramax, CC-LB Dually, Cat-Back, Single, 4"
17933	01-05 GM 6.6L Duramax, CC-SB, Cat-Back, Single, 4"
17935	01-05 GM 6.6L Duramax, EC-LB, Cat-Back, Single, 4"
17902	01-07 GM 6.6L Duramax, CC-SB, Turbo-Back, Single, 4"
17903	01-07 GM 6.6L Duramax, CC-SB, Turbo-Back, Dual, 4"
17909	01-07 GM 6.6L Duramax, CC-SB, Turbo-Back, Single, 5"
17941	06-07 GM 6.6L Duramax, CC-LB Dually, Cat-Back, Single, 4"
17943	06-07 GM 6.6L Duramax, CC-SB, Cat-Back, Single, 4"
17945	06-07 GM 6.6L Duramax, EC-LB, Cat-Back, Single, 4"
17961	06-07 GM 6.6L Duramax, CC-SB, Cat-Back, Single, 5"
17963	06-07 GM 6.6L Duramax, CC-LB, Cat-Back, Single, 5"
17965	06-07 GM 6.6L Duramax, CC-SB, Cat-Back, Dual, 4"
17911	07.5-08 GM 6.6L Duramax, EC/CC-SB-LB, DPF-Back, Single, 4"
17913	07.5-08 GM 6.6L Duramax, EC/CC-SB-LB, DPF-Back, Single, 5"
17915	07.5-08 GM 6.6L Duramax, EC/CC-SB-LB, DPF-Back, Dual, 4"



Rapid Flow Exhaust Systems



Part No.	Description
183010	01-04 GM LB7, Aluminized, Single, 4"
183446	01-04 GM LB7, T409 Stainless, Single, 4"
183026	04.5-07 GM LLY/LBZ, Aluminized, Single, 5"
183040	04.5-07 GM LLY/LBZ, Aluminized, Single, 4"
183240	04.5-07 GM LLY/LBZ, Aluminized, Dual, 4"
183440	04.5-07 GM LLY/LBZ, T409 Stainless, Single, 4"
183412	07.5-08 GM LMM, Aluminized, Single, 5"



Installer Series Exhaust Systems

Part No.	Description
S6000AL	01-05 GM 6.6L , EC-CC, Single, Cat-Back, 4"
S6002AL	01-05 GM 6.6L , EC-CC, Cool Duals™, Cat-Back, 4"
S6022AL	01-05 GM 6.6L , EC-CC, Single, Cat-Back, 5"
S6004AL	01-07 GM 6.6L , EC-CC, Single, Cat-Back, 4", OFF-ROAD
S6006AL	01-07 GM 6.6L , EC-CC, Cool Duals™, Cat-Back, 4", OFF-ROAD
S6020AL	01-07 GM 6.6L , EC-CC, Cool Duals™, Cat-Back, 5", OFF-ROAD
S6012AL	06-07 GM 6.6L , EC-CC, Single, Cat-Back, 4"
S6024AL	06-07 GM 6.6L , EC-CC, Single, Cat-Back, 5"
S6026AL	07.5-08 GM 6.6L LMM, Single, Filter-Back, 4"
S6028AL	07.5-08 GM 6.6L LMM, Cool Duals™, Filter-Back, 4"

GOOD!



XP Series Exhaust Systems

Part No.	Description
S6000409	01-05 GM 6.6L , EC-CC, Single, Cat-Back, 4"
S6002409	01-05 GM 6.6L , EC-CC, Cool Duals™, Cat-Back, 4"
S6004409	01-07 GM 6.6L , EC-CC, Single, Cat-Back, 4", OFF-ROAD
S6006409	01-07 GM 6.6L , EC-CC, Cool Duals™, Cat-Back, 4", OFF-ROAD
S6012409	06-07 GM 6.6L , EC-CC, Single, Cat-Back, 4"
S6014409	06-07 GM 6.6L , EC-CC, Cool Duals™, Cat-Back, 4"
S6026409	07.5-08 GM 6.6L LMM, Single, Filter-Back, 4"
S6028409	07.5-08 GM 6.6L LMM, Cool Duals™, Filter-Back, 4"

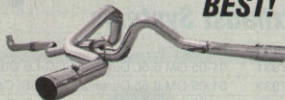
BETTER!



Pro Series Exhaust Systems

Part No.	Description
S6000304	01-05 GM 6.6L , EC-CC, Single, Cat-Back, 4"
S6002304	01-05 GM 6.6L , EC-CC, Cool Duals™, Cat-Back, 4"
S6012304	06-07 GM 6.6L , EC-CC, Single, Cat-Back, 4"
S6014304	06-07 GM 6.6L , EC-CC, Cool Duals™, Cat-Back, 4"
S6026304	07.5-08 GM 6.6L LMM, Single, Filter-Back, 4"
S6028304	07.5-08 GM 6.6L LMM, Cool Duals™, Filter-Back, 4"

BEST!



Smokers Truck Stacks

Part No.	Description
B1410	Smokers Stack - 4" Angle Cut, 36" Length, T304 Stainless, 1 pc.
B1430	Smokers Stack - 4" Turn Out, 36" Length, T304 Stainless, 1 pc.
B1440	Smokers Stack - 4" Turn Out, 48" Length, T304 Stainless, 1 pc.
B1510	Smokers Stack - 5" Straight Cut, 36" Length, T304 Stainless, 1 pc.
B1530	Smokers Stack - 5" Angle Cut, 36" Length, T304 Stainless, 1 pc.
B1540	Smokers Stack - 5" Angle Cut, 48" Length, T304 Stainless, 1 pc.
B1610	Smokers Stack - 6" Angle Cut, 36" Length, T304 Stainless, 1 pc.
BB0004	Checker Plate to cover T-Pipe, 01-07 GM Duramax
KT1004	Stainless Steel Mounting Kit, 01-07 GM 6.6L Duramax
S8000409	01-07 GM 6.6L LB7, LLY, LBZ, Dual Stack System, Downpipe-Back
S8002409	07.5-08 GM 6.6L LMM, Dual Stack System, Filter-Back
UT1001	Universal "T" Pipe Kit, T409 Stainless



Exhaust Pipes & Accessories

Part No.	Description
GMAL401	4" Front Pipe w/Flange - Aluminized, 01-05 GM 6.6L Duramax
GMS9401	4" Front Pipe w/Flange - T409 Stainless, 01-05 GM 6.6L Duramax
GMS9421	4" Front Pipe w/Flange - T409 Stainless, 06-07 GM 6.6L Duramax LLY/LBZ
MDA30	Universal 4" Muffler Delete Pipe, Aluminized, 30"
MDA531	Universal 5" Muffler Delete Pipe, Aluminized, 31"
MDS930	Universal 4" Dual Muffler Delete Pipe, Aluminized, 27"



Exhaust Tips

Part No.	Description
4990002	Polished Stainless Steel Tip w/Rolled Edge



Exhaust Tips

Part No.	Description
180295	Rolled Stainless Steel Tip, 5"
180450	Stainless Steel Tip, 4"-5"



Stainless Steel Exhaust Tips

Part No.	Description
T5049	Dual Wall Straight Tip, 4"-5"
T5050	Rolled Straight Tip, 4"-5"
T5051	Angled Straight Tip, 4"-5"
T5052	Angled Single Wall Tip, 4"-5"
T5053	Dual Wall Angled Tip, 4"-5"
T5072	Dual Wall Angled Tip, 4"-6"
T5074	Dual Wall Angled Tip, 5"-6"
T5075	Angled Rolled End Tip, 5"-6"



Exhaust Manifolds

Part No.	Description
1041460	01-08 GM 6.6L





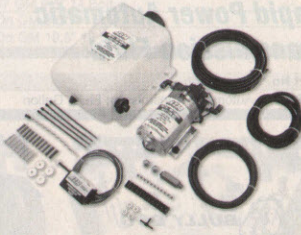
Boost Coolers™



Part No.	Description
48001	Stage 1 Boost Cooler, 93-96 GM 6.5L Diesel
48002	Stage 2 Boost Cooler, 01-07 GM 6.6L Duramax
48003	Stage 3 Boost Cooler, 01-07 GM 6.6L Duramax
40008	Boost Juice, Gallon (Sold in case of 4)
40014	2.5 Gallon Reservoir
40035	Low Fluid Level Indicator Switch
40060	Solenoid Upgrade Valve



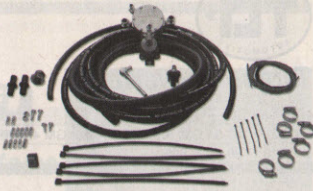
Water/Methanol Injection



Part No.	Description
303000	Water/Methanol Injection Kit, 1-Gallon Tank
303001	HD Water/Methanol Injection Kit, 5-Gallon Tank



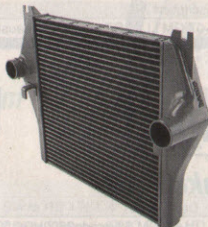
Propane Injection Kit



Part No.	Description
10800	Adjustable Propane Kit - 80 HP
20102	10 Gallon Propane Tank
20152	15 Gallon Propane Tank



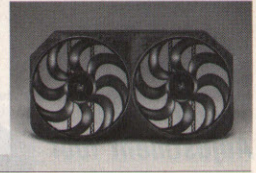
Techni-Coolers



Part No.	Description
25977	02-04 GM 6.6L LB7
25978	04.5-05 GM 6.6L LLY



Electric Fan



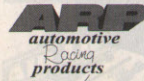
Part No.	Description
284	01-05 GM 6.6L Duramax



Idle Control



Part No.	Description
1036600	High Idle Control - 01-04 GM Duramax LB7



Head Stud Kits



Part No.	Description
130462	Chevy/GMC 6.2L, M12
1844003	Oldsmobile 350 CID, 5.7L



Engine Balancers



Part No.	Description
890101	01-05 GM 6.6L Duramax, External Balance



Performance Oil Filter



Part No.	Description
HP3003	01-07 GM 6.6L Duramax



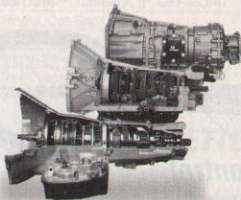
Speedometer Adjustment Tool



Part No.	Description
40550	Speedometer Adjustment Tool



Transmission



Part No.	Description
1064704	01-04 GM LB7 Allison 1000 4wd



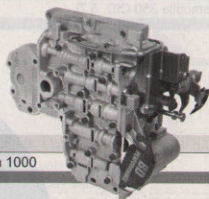
Shift Enhancer Kits



Part No.	Description
153001	01-05 GM Duramax
153002	01-05 GM Duramax, Super Aggressive



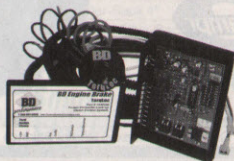
Valve Body



Part No.	Description
1030470	01-04 Duramax LB7 Allison 1000



Transmission Control



Part No.	Description
1030395	TorqLoc Torque Converter Lock-Up



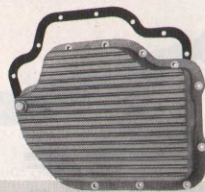
Transmission Pan



Part No.	Description
1061600	01-07 GM Allison 1000, Deep Sump



Deep Transmission Pans



Part No.	Description
228000	GM TH400, 2 extra quarts
278000	GM 4L80E/4L85E, 2 extra quarts
278010	GM 4L80E/4L85E, 4.5 extra quarts
378000	82-96 GM 700R4/4L60, 2 extra quarts
378014	82-96 GM 700R4/4L60, 3.3 extra quarts
538010	GM Allison 1000/2000/2400, holds 10 quarts



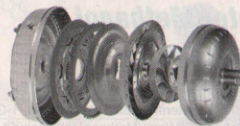
Rapid Power Automatic Transmission Fluid



Part No.	Description
105100	Automatic Transmission Fluid, Gallon



Torque Converter



Part No.	Description
1030230	01-07 GM Duramax w/Allison 1000



Torque Converters



Part No.	Description
242821	84-91 GM 700R4 & 91-later GM 4L60E
242910	90-up 4L80E



Exhaust Brake



Part No.	Description
1024310	06-07 GM LLY/LBZ w/Stock Exhaust



LTS Brake Pads



Part No.	Description
HB322Y717	01-07 GM Silverado2500HD/3500, Front
HB323Y724	01-07 GM Silverado2500HD/3500, Rear

MotiveGear Performance®

Ring & Pinions

Part No. Description

GM95342	GM 9.5" 14 Bolt, 3.42
GM95373	GM 9.5" 14 Bolt, 3.73
GM95410	GM 9.5" 14 Bolt, 4.10
GM95456	GM 9.5" 14 Bolt, 4.56
GM95488	GM 9.5" 14 Bolt, 4.88
G895410IFS	GM 9.25" IFS, 4.10
G895488IFS	GM 9.25" IFS, 4.88
GM105373	GM 10.5" 12 Bolt, 3.73
GM105410	GM 10.5" 12 Bolt, 4.10
GM105456	GM 10.5" 12 Bolt, 4.56
GM105488X	GM 10.5" 12 Bolt, 4.88 (Fits 4.10 & lower case)
GM105513X	GM 10.5" 12 Bolt, 5.13 (Fits 4.10 & lower case)



Ring & Pinion Installation Kits

Part No. Description

GM92IKF	Installation Kit - 88-98 GM 9.25" IFS
GM92IKFL	Installation Kit - 98-On GM 9.25" IFS
GM95IK	Installation Kit - 81-97 GM 9.5" 14 Bolt
GM95IKL	Installation Kit - 98-On GM 9.5" 14 Bolt
GM105IKLA	Installation Kit - 98-On GM 10.5" 12 Bolt

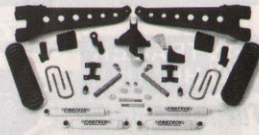
FABTECH

6" Performance Suspension System

- Fits a 315/75/R16 or 315/70R17 or 325/65/R18 Tire
- Must purchase all components for a complete system

Part No. Description

FTS21008BK	6" Component Box: 01-07 Silverado/Sierra 2500HD 4WD
FTS21009BK	6" Component Box: 01-07 Silverado/Sierra 2500HD 4WD
FTS7191	Front Performance Shock - Need 2
FTS7333	Rear Performance Shock - Need 2



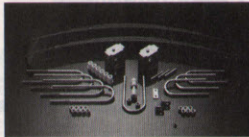
3 SUPERLIFT SUSPENSION SYSTEMS

6" Suspension Systems

- Fits a 35" x 12.50" Tire

Part No. Description

K309	6-7.5" Bracket Style Lift Kit:
	01-09 Chevy Silverado / GMC Sierra 2500HD 4WD
K860	6" Knuckle Style Lift Kit: 01-09 Chevy Silverado / GMC Sierra 2500HD 4WD



RANCHO

4" Suspension System

- Fits a 35" x 12.50" Tire
- Must purchase all components for a complete system

Part No. Description

RS6548B	01-09 Chevy Silverado/GMC Sierra HD 4WD, 4" (Black)
RS5289	Front Shock (Need 2): 01-09 Chevy Silverado/GMC Sierra HD 4WD, 4"
RS5297	Rear Shock (Need 2): 01-09 Chevy Silverado/GMC Sierra HD 4WD, 4"



GM SUSPENSION

SKYACKER SUSPENSIONS

3" Suspension Lift

- Fits a 285/75R16 Tire
- Must purchase all components for a complete system

Part No. Description

C9381	3" Lift Kit - Front Box: 01-09 Silverado/Sierra
BUK2082F	3" Lift Kit - Rear Box: 01-09 Silverado/Sierra
H7074	Front Hydro Shock (need 2)
H7017	Rear Hydro Shock (need 2)



READYLIFT LEVELING SUSPENSION

Suspension Leveling System

- Fits a 33" x 12.50" Tire

Part No. Description

663050	01-09 Silverado/Sierra 2500HD 8-Lug
667822A	GM Torsion Bar Unloading Tool



DAYSTAR

Comfort Ride Leveling Kit

- Fits a 33" x 12.50" Tire

Part No. Description

KG09107	01-09 Silverado/Sierra HD, 2" Front
---------	-------------------------------------



AIR LIFT AIR SPRINGS

LoadLIFTER 5000

Part No. Description

57275	01-09 Chevy Silverado/GMC Sierra 2500/3500HD
25592	Load Controller II: Single Path Compressor System (Front to Rear Leveling)



Firestone

RIDE-RITE

Part No. Description

2250	01-09 Chevy Silverado/GMC Sierra 2500/3500 HD
2178	Dual Electric Air Command: Standard Compressor, Dual Gauge



BILSTEIN

5125 / 5150 Series Shocks

Part No. Description

BE56249H5	5125 Series: 11.94" Compressed / 29.7" Extended
BE56250H5	5125 Series: 14.3" Compressed / 34.9" Extended
BF5A187H1	5150 Series: 12", 255/70
BF5A194H1	5150 Series: 6.5", 255/70
BF5A195H1	5150 Series: 8", 255/70
BF5A196H0	5150 Series: 10", 170/60
BF5A196H1	5150 Series: 10", 255/70
BF5A198H0	5150 Series: 14", 170/60
BF5A198H1	5150 Series: 14", 255/70



PRO COMP SUSPENSION SYSTEMS THAT WORK®

ES3000 Shocks

Part No. Description

300000 Series	ES3000 Shocks
---------------	---------------



TOWING



Super 5th

New!



Super 5th Wheel Hitches - 25.5K

Part No.	Description
0503	Super 5th Hitch: 25.5K
0515	Low Profile Super 5th Hitch: 25.5K
0520	Universal Mounting Kit: fits Super 5th 25.5K SuperBracket Mounting Kit:
0522	99-09 Ford Super Duty (fits Super 5th 25.5K) SuperBracket Mounting Kit:
0525	03-08 Dodge 2500/3500 (fits Super 5th 25.5K) SuperBracket Mounting Kit: 99-09 Silverado/Sierra 2500/3500 (fits Super 5th 25.5K)
0527	

Super 5th Wheel Hitches - 16/20.5K

Part No.	Description
0800	Super 5th Hitch: 20.5K
1200	Super 5th Hitch: 16K
0820	Universal Mounting Kit: fits Super 5th 16/20.5K SuperBracket Mounting Kit: fits Super 5th 16/20.5K Super Duty (fits Super 5th 16/20.5K)
0822	
0826	SuperBracket Mounting Kit: 99-09 Silverado/Sierra 2500/3500 (fits Super 5th 16/20.5K) SuperBracket Mounting Kit: 03-08 Dodge 2500/3500 (fits Super 5th 16/20.5K)
0827	
0841	SuperRail Mounting Kit: 99-09 Ford Super Duty (fits Super 5th 16/20.5K) SuperRail Mounting Kit: 99-09 Silverado/Sierra 2500/3500 (fits Super 5th 16/20.5K)
0843	

SuperGlide 5th Wheel Hitches - 24K

Part No.	Description
3600	SuperGlide 5th Wheel: 24K (18" Slide)
3513	SuperRail Kit: 99-09 Ford Super Duty (fits SuperGlide 24K)
3515	SuperRail Kit: 99-09 Silverado/Sierra 2500/3500 (fits SuperGlide 24K)
3519	SuperRail Kit: 03-08 Dodge 2500/3500 (fits SuperGlide 24K)

SuperGlide 5th Wheel Hitches - 14/18K

Part No.	Description
4400	SuperGlide 5th Wheel: 18K (14" Slide)
4100	SuperGlide 5th Wheel: 14K (14" Slide)
3340	Universal Rail Kit: fits SuperGlide 14/18K
3343	SuperRail Kit: 99-09 Ford Super Duty (fits SuperGlide 14/18K)
3345	SuperRail Kit: 99-09 Silverado/Sierra 2500/3500 (fits SuperGlide 14/18K)
3349	SuperRail Kit: 03-08 Dodge 2500/3500 (fits SuperGlide 14/18K)

Gooseneck Adapters & Accessories

Part No.	Description
050601	25K Gooseneck Adapter: fits Super 5th 25.5K
080801	20K Gooseneck Adapter: fits Super 5th 20.5K
3335	18K Gooseneck Adapter: fits SuperGlide 14/18K
4424	Horse Trailer Adapter: fits SuperGlide (4" round tube)
3317	Universal Capture Plate: fits all SuperGlide Models
4408	3" Lift Kit: fits SuperGlide 14/18K
3334	Fitted Cover: fits SuperGlide 14/18K



REESE

5th Wheel Hitches

Part No.	Description
30056	Pro Series 5th Wheel: 15K (w/ Rails)
30046	Pro Series 5th Wheel: 15K (w/o Rails)
30047	Select Series 5th Wheel: 16K (w/o Rails)
30051	Select Series 5th Wheel: 16K with Kwik-Slide (w/o Rails)
30081	Select Plus™ 5th Wheel: 18K (w/o Rails)
30034	22K Fifth Wheel Hitch (w/o Rails)
30048	Kwik-Slide™: Square Tube Slide for Select & Select Plus 5th Wheels
30035	Frame Rail Kit (required for installation)



Class V Titan™ Receivers

Part No.	Description
45002	80-97 Ford F-150/250/350
45008	99-09 Ford F-250/350 Super Duty
45014	99-09 Ford F-450/550 Super Duty
45288	03-08 Dodge Ram 1500/2500/3500



B & W TRAILER HITCHES

Turnover Ball™ Gooseneck Hitch

Part No.	Description
1062	01-09 Silverado/Sierra 3500HD (w/ 2 Bed Crossmembers)
1067	01-09 Silverado/Sierra 2500/3500HD
1108	99-09 Ford Super Duty
1306	03-08 Dodge Ram 2500/3500
1394	94-02 Dodge Ram (exc. 2002 1500)



Companion™ 5th Wheel Hitch

Part No.	Description
3000	Companion 5th Wheel



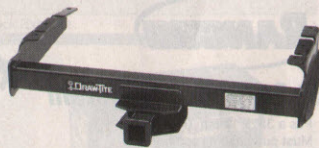
Gooseneck Accessories

Part No.	Description
4085	Gooseneck Extender: 4"
TEXA4200	Extend-a-Goose: 10" Coupler Extender



DRAW-TITE® Ultra Frame Class IV Hitches

Part No.	Description
41929	03-09 Dodge Ram 2500/3500
41931	99-09 Ford F-250/350 Super Duty
41934	01-06 Silverado/Sierra 2500/3500HD
41937	07-09 Silverado/Sierra 2500/3500HD





Activator® Brake Controllers

Part No.	Description
5100	Activator® Electronic Brake Control, 1 to 2 Axle Trailers
5500	Activator II® Electronic Brake Control, 1 to 4 Axle Trailers
5520	Activator III® Electronic Brake Control, 1 to 4 Axle Trailers



Brake Controllers

Part No.	Description
47225	Brake-Force™ Brake Controller: 2 to 6 Brake Trailers
47235	Impulse Adjustable Brake Controller



Tekonsha Brake Controllers

Part No.	Description
39510	Tekonsha Brake Control: 1 to 4 Axle Trailers, Proportional
39519	Prodigy® Electronic Brake Control: 1 to 4 Axle Trailers, Proportional
39526	P-3™ Brake Controller: 1 to 4 Axle Trailers



Brake Controllers

Part No.	Description
52650	Journey Electronic Brake Control: 2/4 Brake Systems
52740	Journey HD Brake Control: 2/4/6/8 brake systems (adj.)
52810	Odyssey Balanced Brake Control: 2-8 Brake Systems



Brake Controller Adapters

Part No.	Description
20260	Brake Controller Harness: 97-04 F-250/350
20270	Brake Controller Harness: 08-09 Ford F-250-550
20261	Brake Controller Harness: 95-09 Dodge Ram
20263	Brake Controller Harness: 99-02 Silverado/Sierra
20264	Brake Controller Harness: 03-06 Silverado/Sierra



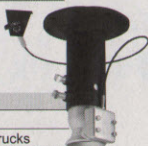
5th Wheel Harness

Part No.	Description
20110	99-09 Silverado/Sierra; 99-09 Ford F-250/350/450 Super Duty (w/Factory 7-Way)
20111	00-08 Dodge Ram (w/Factory 7-Way)
20132	90*: 00-08 Dodge Ram (w/Factory 7-Way)
20134	90*: 99-09 Silverado/Sierra; 99-09 Ford F-250/350/450 Super Duty (w/Factory 7-Way)



Rapid Hitch Adapter

Part No.	Description
3100	Ranch Hitch Adapter
3139	Ranch Hitch Adapter w/8" Offset for Short Bed Trucks



Pintle Mount & Hooks

Part No.	Description
63011	Pintle Hook w/2" Ball (Inc. Grade 8 Hardware)
63012	Pintle Hook w/2-5/16" Ball (Inc. Grade 8 Hardware)
63057	Pintle Hook Receiver Mount, 7-5/8" Length, 12,000 lbs. (GTW), 1,200 lbs. (TW)



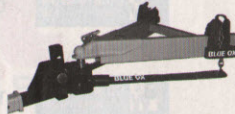
Tow Bars

Part No.	Description
BX4325	Aladdin® Tow Bar: 5,000 lb. Class III Rating
BX7322	Adventurer™ Tow Bar: 5,000 lb. Class III Rating
BX7445	Aventa LX™ Tow Bar: 10,000 lb. Class IV Rating



SwayPro™ Weight Distributing Hitch

Part No.	Description
BXW0550	SwayPro™ 550 lb.
BXW0750	SwayPro™ 750 lb.
BXW1000	SwayPro™ 1,000 lb.
BXW1500	SwayPro™ 1,500 lb.



Round Bar Weight Distributing Hitches

Part No.	Description
48051	550 lbs./10,000 lbs.
48052	750 lbs./10,000 lbs.
48053	1,000 lbs./10,000 lbs.
48054	1,400 lbs./14,000 lbs.



Round Bar Weight Distributing Hitches

Part No.	Description
70210	Round Bar Weight Distributing Hitch: 6,000 lbs.
70220	Round Bar Weight Distributing Hitch: 8,000 lbs.
70230	Round Bar Weight Distributing Hitch: 12,000 lbs.
75190	Sway Control for Weight Distributing Hitches



Equal-i-zer Sway Control Hitch

Part No.	Description
90000400	Equal-i-zer w/std. Shank 400/4,000 lbs.
90000600	Equal-i-zer w/std. Shank 600/6,000 lbs.
90001000	Equal-i-zer w/std. Shank 1,000/10,000 lbs.
90001200	Equal-i-zer w/std. Shank 1,200/12,000 lbs.
90001400	Equal-i-zer w/std. Shank 1,400/14,000 lbs.



E2™ Hitch

Part No.	Description
94000600	Round Bar Style 600/6,000 lbs.
94000800	Round Bar Style 800/8,000 lbs.
94001000	Round Bar Style 1,000/10,000 lbs.
94001061	Round Bar Style 1,000/10,000 lbs. (w/2-5/16" Ball)



16.5ti Winch

Part No.	Description
68801	16.5ti Winch, 16,500 lbs.



We Offer A Complete Line Of Towing Products

REESE

5th Wheels

Pro-Series™
Select Series
Select Plus™ Series
Signature Series®

Valley

Power Maxx
Pull Maxx

PullRite

SuperGlide
Super 5th

EW COMPANION
5TH WHEEL HITCH

Companion™

EW COMPANION
5TH WHEEL HITCH

Goosenecks

Turnover Ball™

REESE

The Goose™

DRAW-TITE

Hide-A-Goose

BLUE OX

Diamond Hitch

Valley

Stow-A-Ball™

REESE

Weight Distributing

Pro-Series™
Reese® SC
Dual Cam HP
Strait-Line™

Valley

Round Bar

eaz lift

Elite Series

THE ORIGINAL
Equal-i-zer
SWAY CONTROL HITCH

Original Equalizer®
E2™

BLUE OX

Sway Pro™

DRAW-TITE

Receiver Hitches

Class 1-4
Ultra-Frame™
Titan™, Super Titan™

Valley

Class 1-4
Power Pull Xtreme Series

TEKONSHA

Brake Controls

Voyager®
Prodigy®
P3™
Primus® IQ
Prodigy™ RF Trailer Mount

REESE

Brakeman™
POD®
Pilot®

DRAW-TITE

Activator®
Activator® II
Activator® III

HOPKINS
TOWING SOLUTIONS

Impulse™
Brake-Force™
Reliance™
Agility™

Valley

Odyssey®
Odyssey II™
Journey™
Journey HD™

TOW-READY

Trailer Wiring

T-One® Connectors
Trailer Connectors

HOPKINS
TOWING SOLUTIONS

Plug-In-Simple!®
Multi-Tow®

Valley

T-Connectors
Trailer Connectors

BLUE OX

Tow Bars

Aventa LX®
Aladdin®
Adventure™

We Now Offer



THE ORIGINAL

Equal-i-zer

SWAY CONTROL HITCH

eaz lift

BY CAMCO



TIMBREN SES
Suspension Enhancement Systems



EVERYTHING YOU NEED FOR YOUR DIESEL PERFORMANCE PROJECT



- PROGRAMMERS
- TRANSMISSIONS
- EXHAUST
- TORQUE CONVERTERS
- INJECTION SYSTEMS..AND MORE!



BULLY DOG
#1 IN PERFORMANCE



DIABLOSPORT.
GASOLINE AND DIESEL TUNING SYSTEMS



Motive Gear

Superchips

bankz POWER

TRUE↑FLOW



880268087629